

COUNTAX™

SERVICE BULLETIN

03- T7. 15

DATE: 19/03/03

MODELS CONCERNED: All Countax Tractors

CONCERNING: Printed Circuit Board Programming

New Printed Circuit Board Pt. No. 448009400.

Should you change or re-programme the main PCB, the procedure is as follows: -

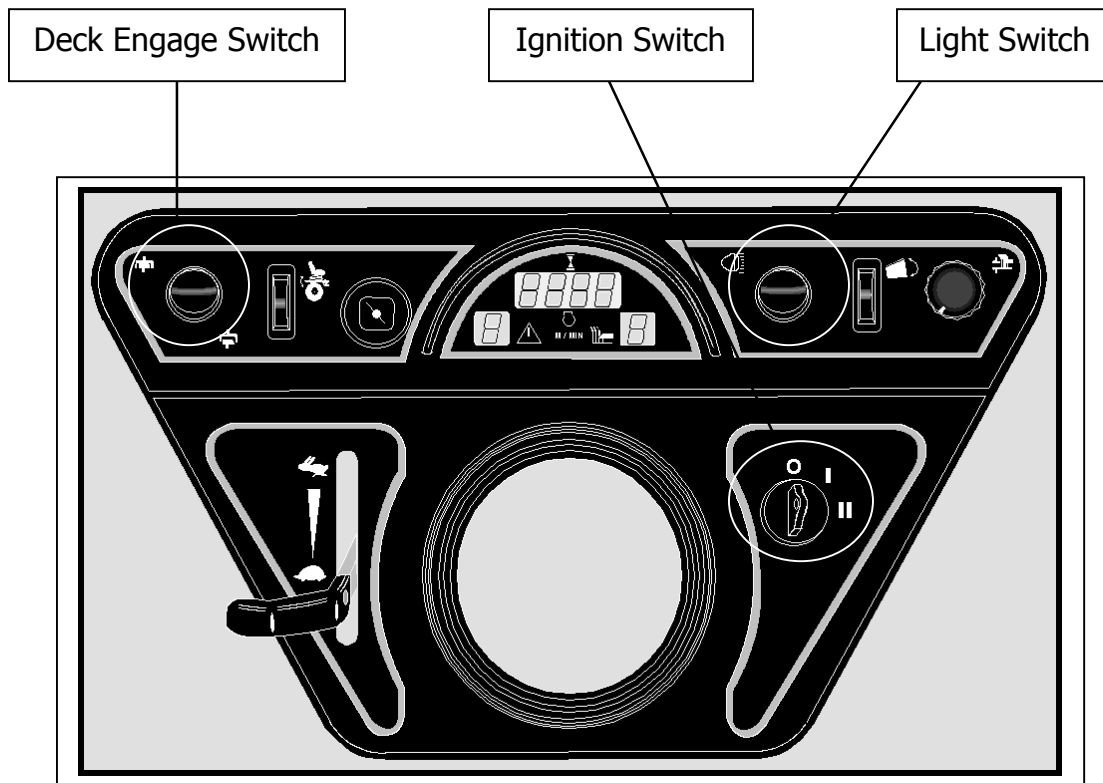
Hold down both the light switch & the electric clutch switch.

Whilst still holding down the light & electric clutch switches, turn on the ignition switch.

Wait until the headlights flash once (approximately 5 seconds); the relays on the PCB will also be heard to click.

Release all the switches.

The PCB rev-counter should now read 1 – 0; this is the original setting.

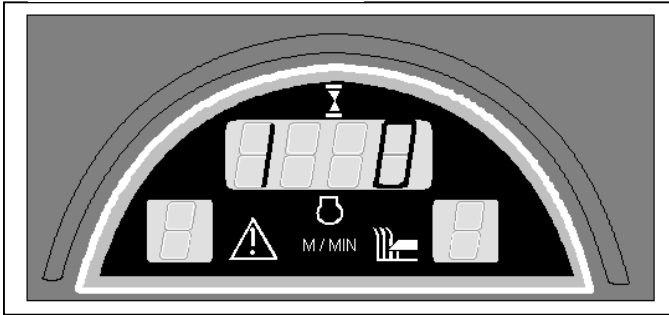


The programming is set in two different modes on U22 coded boards, the coding is shown on the display when the ignition is switched on.

Mode 1 is to set the board to read whether the deck lift is manual or electric.

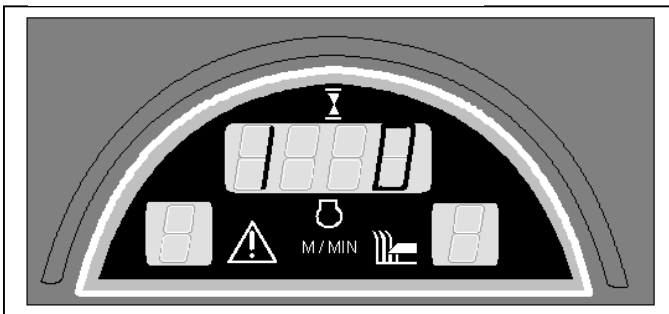
Mode 2 is used to set whether the engine is a 1 or 2 cylinder engine, this allows the correct engine RPM to be sensed. On boards coded U23 calibration display 3 0 indicates Flashing headlights disabled 3 1 Flashing headlights enabled.

Calibration Mode 1



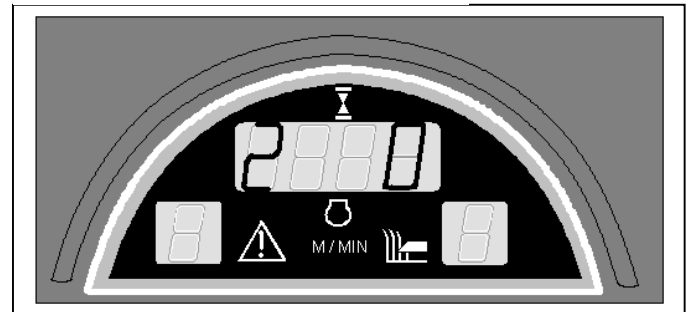
To adjust Programming mode depress light switch, whilst in calibration mode.

Mode 1. - Deck Lift

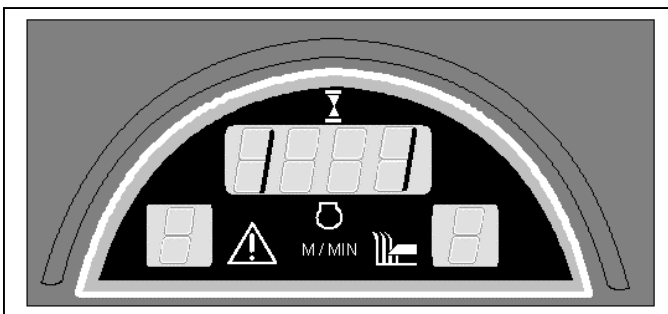


Mode "1" Setting "0"
All non- electric lift Models

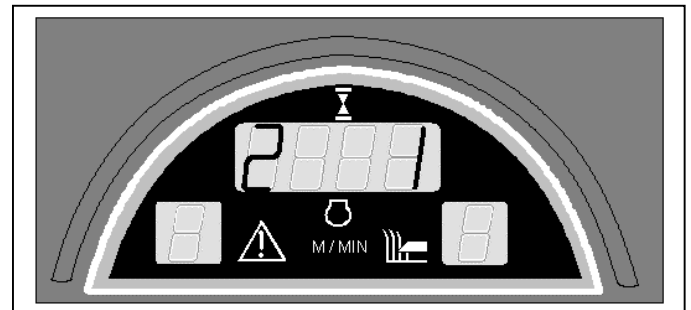
Mode 2. - Engine (RPM)



Mode "2" Setting "0"
All 2 cyl. Models



Mode "1" Setting "1"
All electric lift Models



Mode "2" Setting "1"
All 1 cyl. Models

To change display numbers when calibrating, use the light switch to change the calibration mode & the electric clutch switch to change the setting.
The programming **must** be done in sequence. I.e. Mode 1, Mode 2 etc.
Once the settings have been made turn the ignition switch off to save the calibration.

To clear service warning: Without Ignition on, press down on Clutch switch only, turn on Ignition and hold for 5 seconds.

PROGRAMMING EXAMPLE

For a tractor with twin cylinder engine and dial-a-height.

Follow steps 1 to 5 which will give a display reading of 1 – 0.

Next, keeping the Left-hand display at mode 1, change the setting to 1 by pressing the electric clutch switch once.

For twin-cylinder engine change the Left-hand display to mode 2 by pressing the light switch, the setting should read 0. Should this not be the case use the electric clutch switch to change the setting to 0

Turn the ignition switch off to save settings.

NB.

i. With Dial-a height turning the knob will give readings from 0 to 9.

Where Dial-a-height is not fitted 0 will be displayed.

ii. Maximum engine RPM should be 3000rpm if this is not registered on the display at max. revs. Re- check calibration.

TYPICAL SETTINGS BY MODEL U23 PCB

Twin cylinder Petrol without Dial Height

Mode	Setting	Result
1	0	Dial Height Disabled
2	0	Twin Cylinder Petrol Engine (not Kawasaki)
3	0	Flashing Headlights Enabled

Single cylinder Petrol without Dial Height

Mode	Setting	Result
1	0	Dial Height Disabled
2	1	Single Cylinder Petrol Engine
3	0	Flashing Headlights Enabled

Twin cylinder Petrol with Dial Height

Mode	Setting	Result
1	1	Dial Height Enabled
2	0	Twin Cylinder Petrol Engine (not Kawasaki)
3	0	Flashing Headlights Enabled

Single cylinder Petrol with Dial Height

Mode	Setting	Result
1	1	Dial Height Enabled
2	1	Single Cylinder Petrol Engine
3	0	Flashing Headlights Enabled

TYPICAL SETTINGS – PCB VERSION DU3 AND ABOVE

Diesel Model

Mode	Setting	Result
1	1	Dial Height Enabled
2	0	Twin Cylinder Petrol Engine (not Kawasaki)
3	0	Flashing Headlights Enabled
4	1	Diesel Engine Selected
5	0	Kawasaki Engine not selected

Kawasaki Model

Mode	Setting	Result
1	1	Dial Height Enabled
2	0	Twin Cylinder Petrol engine (for Kawasaki use 5)
3	0	Flashing Headlights Enabled
4	0	Diesel Engine not selected
5	1	Kawasaki Engine selected

Note: When the 'S' light flashes in Park brake position, this means the tractor is due for a service. To cancel the 'S' light hold down clutch switch and turn on ignition switch and hold for 8 seconds. The 'S' light will then go out.

Part No.		
449559600	Original Dial Height PCB	Used on C & A up to 20930... D & K to 32003...
449559601	Angled Dial Height PCB	Used on C series from 21001... to 21104... Used on A series from 21001...
449560600	Angled Dial Height PCB	Used on C series from 21211... Used on A series from 21001... Used on D & K series from 32003...
449560701	Angled Dial Height PCB	Used on C series from 31111.... (can also be used on A, D & K series)
449561101	Potted Dial Height PCB	Used on D series from 40116... (and JCB D20/50) Used on K series from 40415...

Please contact COUNTAX service department for any further information