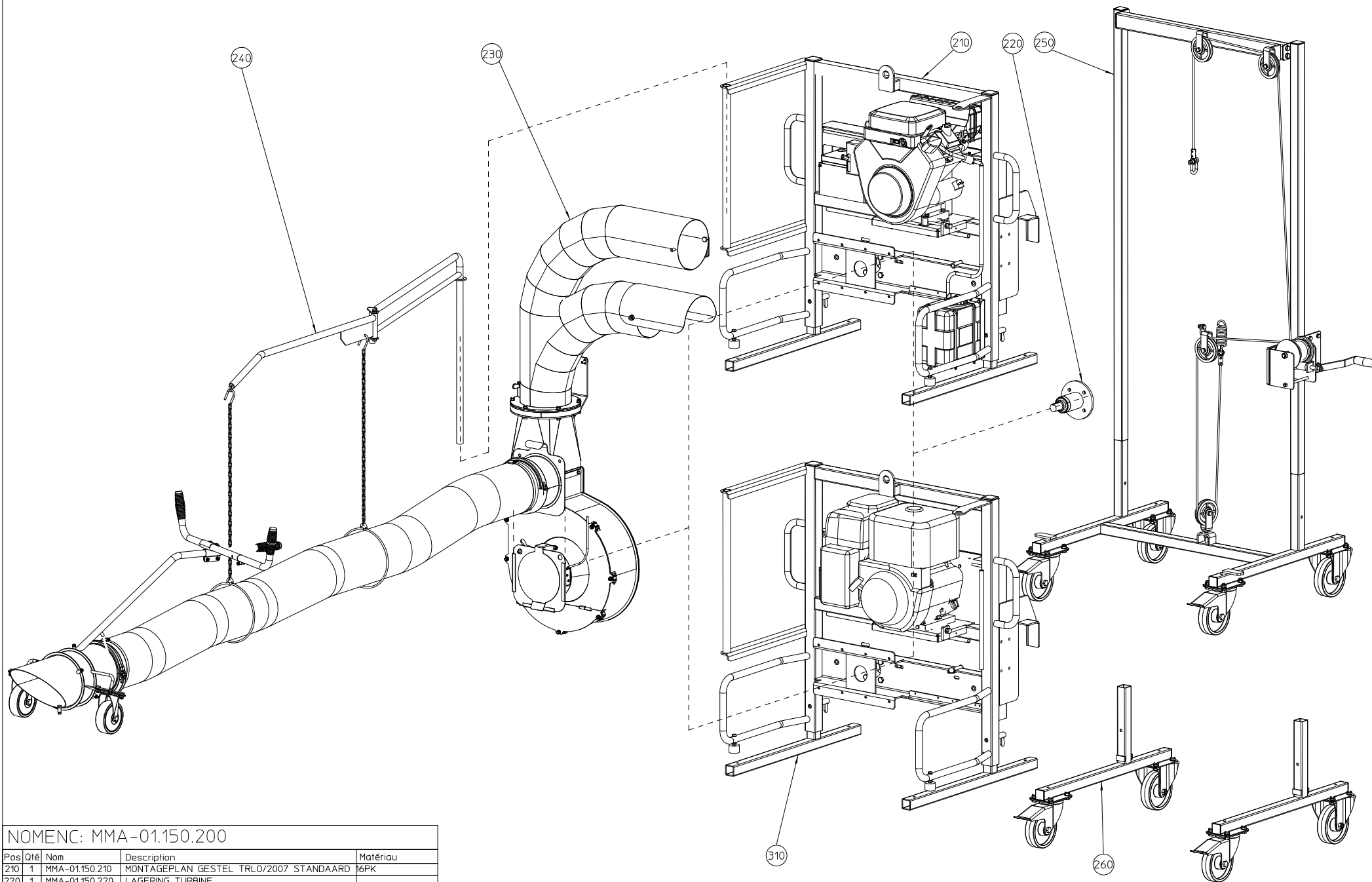


Ersatzteilliste ELIET
Liste des pièces de rechange ELIET

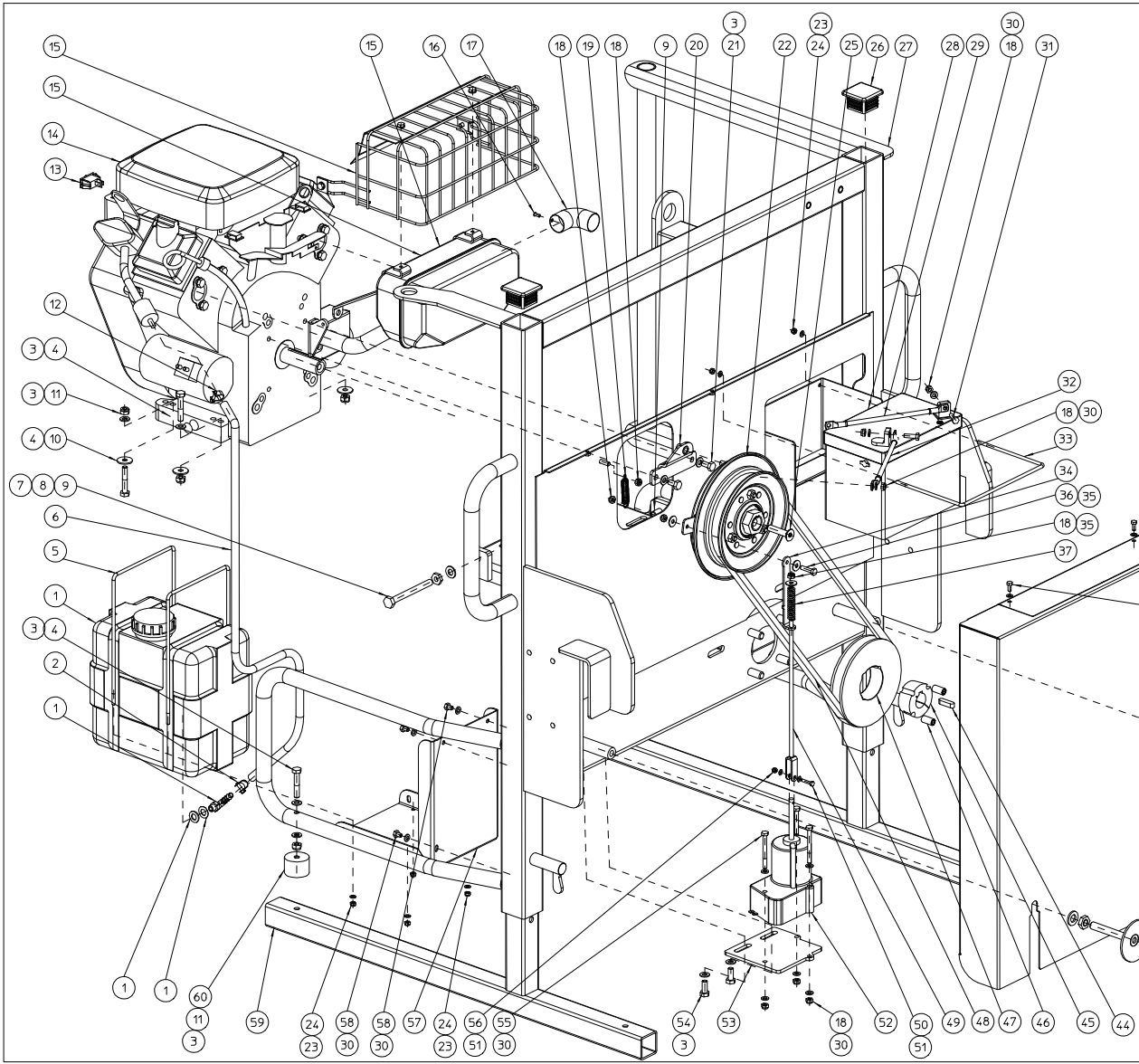
TRUCK LOADER



NOMENC: MMA-01.150.200

Pos	Qté	Nom	Description	Matériau
210	1	MMA-01.150.210	MONTAGEPLAN GESTEL TRLO/2007 STANDAARD	16PK
220	1	MMA-01.150.220	LAGERING TURBINE	
230	1	MMA-01.150.230	MONTAGEPLAN TURBINE	
240	1	MMA-01.150.240	MONTAGEPLAN ZWENKARM MET AANZUIGLEIDING	
250	1	MMA-01.150.250	OPTIE TRLO/2007-LIFT	
260	1	MMA-01.150.260	TRLO/2007 OPTIE-MOBIELE TRANSPORTSTEUNEN	
310	1	MMA-01.150.310	MONTAGEPLAN GESTEL TRLO/2007 13PK	

ALGEMEEN MONTAGEPLAN TRLO/2007				
NO	MMA-01.150.200	REV	1	DATE
				2007/07/26



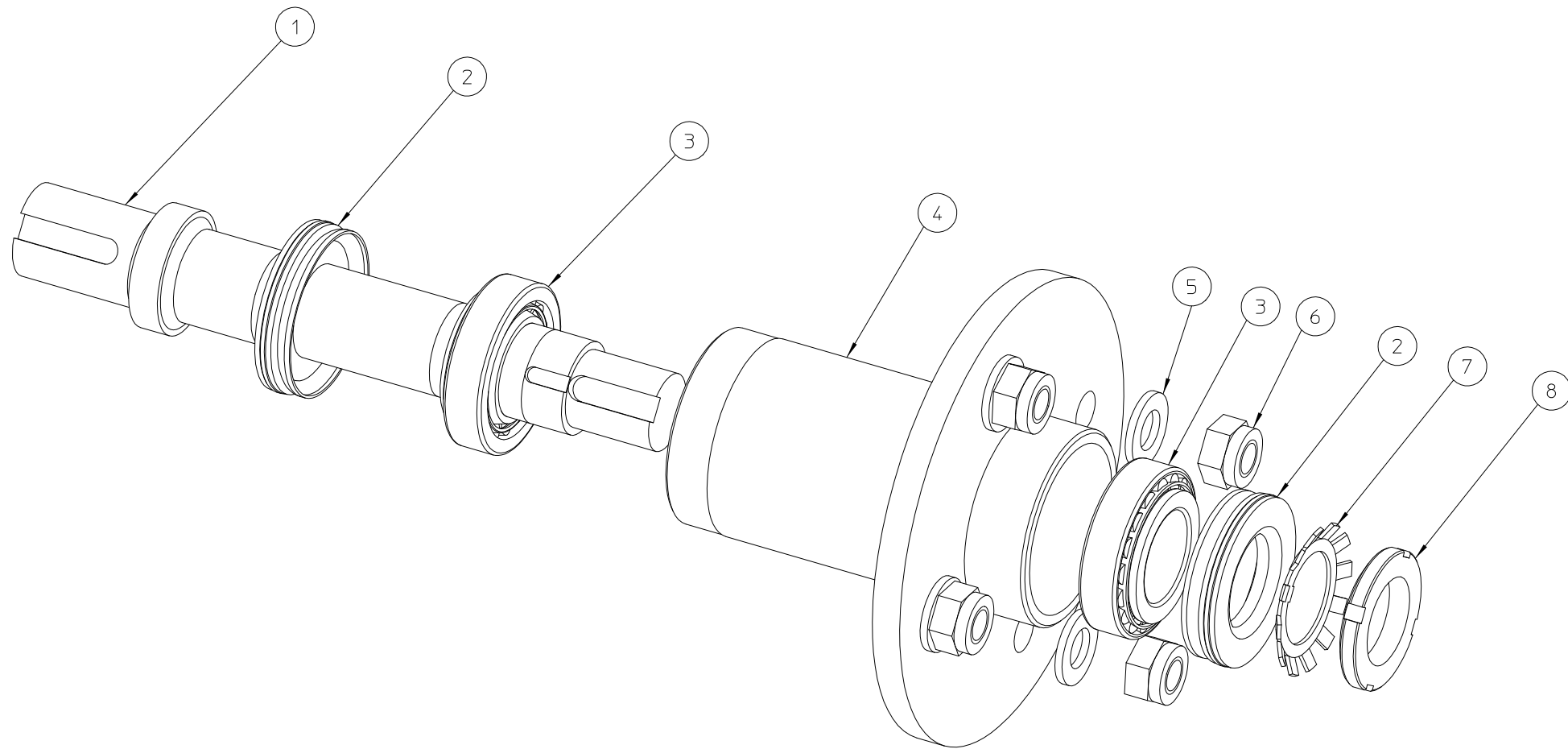
NOMENC: MMA-01.150.210

Pos	Qté	Nom	Description	Matériau
1	1	BY-717.203.006	BRANDSTOFTANK MIT-COMPLEET	
2	1	BT-670.111.130	SLANGENKLEM MINI ABA 9/11-13 ZI	
3	12	BS-531000.800	DIN 125 RONDELLE M8	
4	6	BS-511000.841	DIN 931 VIS M8X4,5	
5	2	MFA-01.150.420	BEUGEL BRANDSTOFTANK	
6	1	BR-202.007.095	BRANDSTOFSLANG 7,5 MMX95 CM	
7	2	BS-531000.1000	DIN 125 RONDELLE M10	
8	2	BS-501901.000	6KT LAGEROER DIN 439-M10	
9	2	BS-502000.050	DIN 985 ECROU NYLON M6	
10	2	BS-532.008.224	RONDELLE DE CARROSSERIE M8X25X2	
11	6	BS-502000.800	DIN 985 ECROU NYLON M6	
12	1	BT-670.109.110	COLLIER	
13	1	BM-260.919.995	SCHAARLAAR B & S -16A 125 VAV	
14	1	BR-20136.001	MOTOR B & S 16PK VANGUARD E-S	
15	1	BR-202.005.003	KIT UITLAAT BESCHERMING 6PK & 18PK VANGUARD 2 CYL	
16	1	BB-22.004.100	DIN 7337 RIVET ACIER 3,9X10	
17	1	BT-122.172.828	COUDE EN CUIVRE F/F 28MM	
18	10	BS-502000.600	DIN 985 ECROU NYLON M6	
19	1	BV-915.000.040	TREKVEER 10X11X55	
20	1	MFA-01.150.710	AANSLAG KOPPELING	
21	1	BS-512.000.816	UNF VIS 5/16 X 5/8	
22	1	BA-271.317.011	AUTOMATISCHE KOPPELINGNORAM-CB177	
23	8	BS-531000.500	DIN 125 RONDELLE M5	
24	6	BS-502000.500	DIN 985 ECROU NYLON M5	
25	1	BS-522.01.041	VERZONKEN SCHROEFBOUT DIN 7991 3/8X13/4	
26	2	BR-021.150.500	BUISSTOP 50X50	
27	1	MFA-01.150.600	GESTEL	
28	1	BE-240.120.240	BATTERIE 12V 24AH-186XB125XH176-+	
29	1	BE-090.281.011	BATTERIJ AANSLUITKABEL 100D-140 CM-M6	
30	12	BS-531000.620	DIN 125 RONDELLE M6	
31	2	BS-512.000.620	DIN 933 VIS M6X20	
32	1	BE-090.180.201	BATTERIJ AANSLUITKABEL ZWART-20 CM-M6	
33	1	MFA-01.140.740	KLEMBEUGEL BATTERIJ	
34	1	MFA-01.150.655	STEUN TREKSTANG KOPPELING	
35	3	BS-532.006.183	RONDELLE DE CARROSSERIE M6X18X15	
36	1	BS-512.000.625	DIN 933 VIS M6X25	
37	1	BV-915.000.030	DRUKVEER 2X55X12	
38	2	BS-512.000.512	BKT. TAPBOUT DIN 933 M5X12	
39	2	BR-900.000.110	CAOUTCHOUC POUR PIED DIA-90X18MM	
40	2	MFA-01.150.190	AFSTELSTEUN	
41	2	BS-501901.200	DIN 439 1/2 ECROU M12	
42	2	BS-531001.200	DIN 125 RONDELLE M12	
43	1	MFA-01.150.605	AFSCHERMING AANDRIJVING	
44	1	BB-341.080.730	SPIE 8X7X30	
45	1	BB-501.132.500	KONISCHE KLEMBUS TL1610-25	
46	2	BB-501.131.220	BOLJON POUR MOYEU AMOVIBLE-SCR 7/16X7/8<->-TL2012	
47	1	BA-563.714.010	POULIE SPB 140 TL	
48	1	BA-521.814.250	V-RIEM B54-1425 LP-GATES HI POWER	
49	1	MFA-01.150.745	AANTREKSTANG KOPPELING	
50	1	BS-512.000.400	DIN 933 VIS M6X20	
51	2	BS-531000.400	DIN 125 RONDELLE M4	
52	1	BA-700.200.101	ELEKTROPNEUM. ACTUATOR AANGEPAST	
53	1	MFA-01.150.700	STEUN ACTUATOR	
54	2	BS-512.000.820	DIN 933 VIS M8X20	
55	3	BS-511.000.644	DIN 931 VIS M6X60	
56	1	BS-502000.400	DIN 985 ECROU NYLON M4	
57	1	MFA-01.150.610	STEUN BRANDSTOFTANK	
58	3	BS-512.000.608	6KT TAPBOUT DIN 933-M6X8	
59	2	MFA-01.150.185	TRANSPORTSTEUN	
60	2	BR-600.240.280	CYLINDRE BLOC BUTEE GMT 40X28 M8	

NOMENC: MMA-01.150.210

Pos	Qté	Nom	Description	Matériau
1	1	BY-717.203.006	BRANDSTOFTANK MIT-COMPLEET	
2	1	BT-670.111.130	SLANGENKLEM MINI ABA 9/11-13 ZI	
3	12	BS-531000.800	DIN 125 RONDELLE M8	
4	6	BS-511000.841	DIN 931 VIS M8X4,5	
5	2	MFA-01.150.420	BEUGEL BRANDSTOFTANK	
6	1	BR-202.007.095	BRANDSTOFSLANG 7,5 MMX95 CM	
7	2	BS-531001.000	DIN 125 RONDELLE M10	
8	2	BS-501901.000	6KT LAGEROER DIN 439-M10	
9	2	BS-512.001.050	DIN 933 VIS M10X100	
10	4	BS-532.008.224	RONDELLE DE CARROSSERIE M8X25X2	
11	6	BS-502000.800	DIN 985 ECROU NYLON M6	
12	1	BT-670.109.110	COLLIER	
13	1	BM-260.919.995	SCHAARLAAR B & S -16A 125 VAV	
14	1	BR-20136.001	MOTOR B & S 16PK VANGUARD E-S	
15	1	BR-202.005.003	KIT UITLAAT-BESCHERMING 6PK & 18PK VANGUARD 2 CYL	
16	1	BB-22.004.100	DIN 7337 RIVET ACIER 3,9X10	
17	1	BT-122.172.828	COUDE EN CUIVRE F/F 28MM	
18	10	BS-502000.600	DIN 985 ECROU NYLON M6	
19	1	BV-915.000.040	TREKVEER 10X11X55	
20	1	MFA-01.150.710	AANSLAG KOPPELING	
21	2	BS-512.040.816	UNF VIS 5/16 X 5/8	
22	1	BA-271.317.011	AUTOMATISCHE KOPPELINGNORAM-CB177	
23	8	BS-531000.500	DIN 125 RONDELLE M5	
24	6	BS-502000.500	DIN 985 ECROU NYLON M5	
25	1	BS-522.01.041	VERZONKEN SCHROEFBOUT DIN 7991 3/8X13/4	
26	2	BR-021.150.500	BUISSTOP 50X50	
27	1	MFA-01.150.600	GESTEL	
28	1	BE-240.120.240	BATTERIE 12V 24AH-186XB125XH176-+	
29	1	BE-090.281.011	BATTERIJ AANSLUITKABEL ROOD-140 CM-M6	
30	12	BS-512.000.620	DIN 125 RONDELLE M6	
31	2	BS-512.000.620	DIN 933 VIS M6X20	
32	1	BE-090.180.201	BATTERIJ AANSLUITKABEL ZWART-20 CM-M6	
33	1	MFA-01.140.740	KLEMBEUGEL BATTERIJ	
34	1	MFA-01.150.655	STEUN TREKSTANG KOPPELING	
35	3	BS-532.006.183	RONDELLE DE CARROSSERIE M6X18X15	
36	1	BS-512.000.625	DIN 933 VIS M6X25	
37	1	BV-915.000.030	DRUKVEER 2X55X12	
38	2	BS-512.000.512	BKT. TAPBOUT DIN 933 M5X12	
39	2	BR-900.000.110	CAOUTCHOUC POUR PIED DIA-90X18MM	
40	2	MFA-01.150.190	AFSTELSTEUN	
41	2	BS-501901.200	DIN 439 1/2 ECROU M12	
42	2	BS-531001.200	DIN 125 RONDELLE M12	
43	1	MFA-01.150.605	AFSCHERMING AANDRIJVING	
44	1	BB-341.080.730	SPIE 8X7X30	
45	1	BB-501.132.500	KONISCHE KLEMBUS TL1610-25	
46	2	BB-501.131.220	BOLJON POUR MOYEU AMOVIBLE-SCR 7/16X7/8<->-TL2012	
47	1	BA-563.714.010	POULIE SPB 140 TL	
48	1	BA-521.814.250	V-RIEM B54-1425 LP-GATES HI POWER	
49	1	MFA-01.150.745	AANTREKSTANG KOPPELING	
50	1	BS-512.000.400	DIN 933 VIS M6X20	
51	2	BS-531000.400	DIN 125 RONDELLE M4	
52	1	BA-700.200.101	ELEKTROPNEUM. ACTUATOR AANGEPAST	
53	1	MFA-01.150.700	STEUN ACTUATOR	
54	2	BS-512.000.820	DIN 933 VIS M8X20	
55	3	BS-511.000.644	DIN 931 VIS M6X60	
56	1	BS-502000.400	DIN 985 ECROU NYLON M4	
57	1	MFA-01.150.610	STEUN BRANDSTOFTANK	
58	3	BS-512.000.608	6KT TAPBOUT DIN 933-M6X8	
59	2	MFA-01.150.185	TRANSPORTSTEUN	
60	2	BR-600.240.280	CYLINDRE BLOC BUTEE GMT 40X28 M8	

MONT.PLAN GESTEL TRLO/2007 STAND.16PK
 NO MMA-01.150.210 REV 1 DATE 2007/07/24

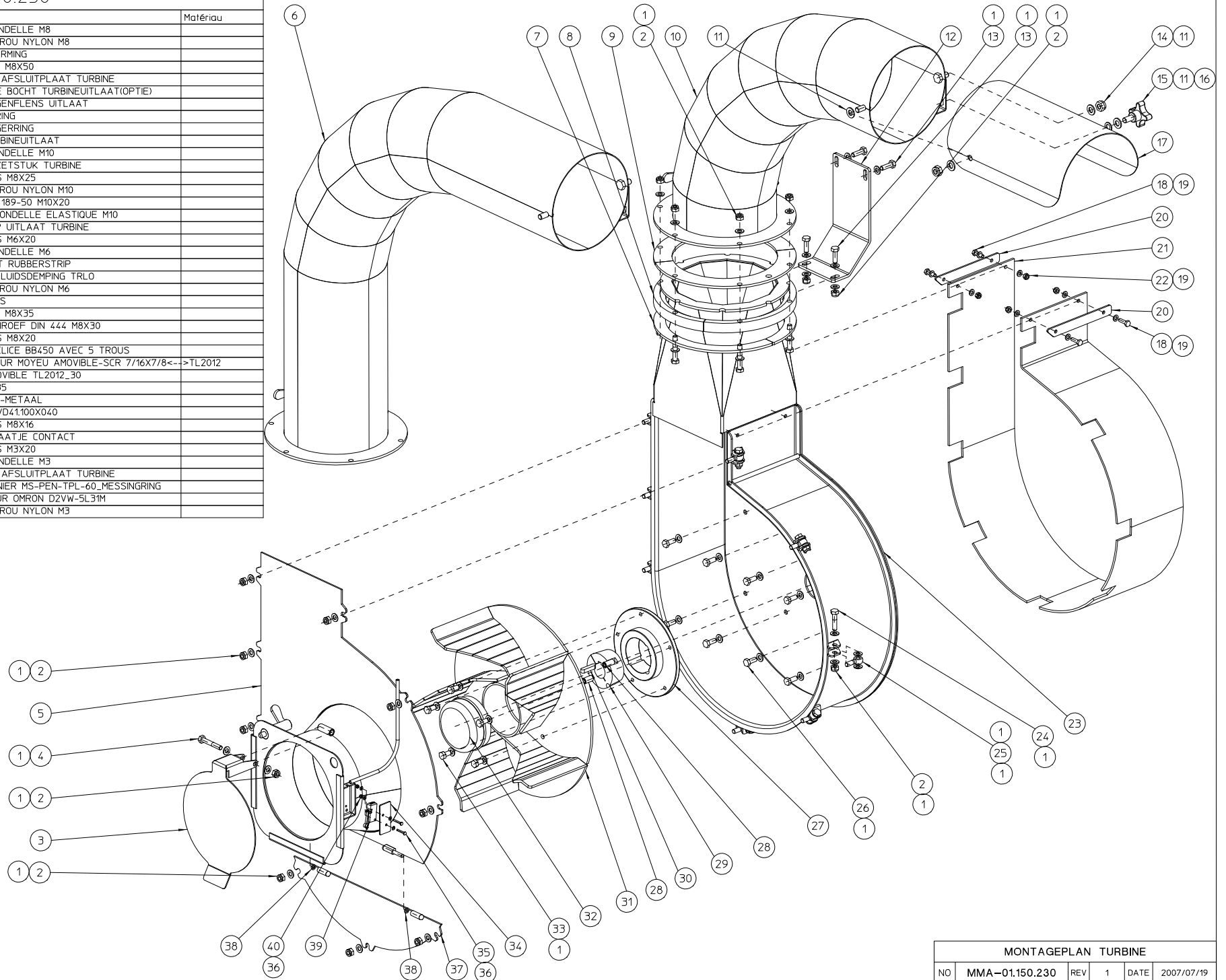


NOMENC: MMA-01.150.220				
Pos	Qté	Nom	Description	Matériau
1	1	MPA-01.150.630	TURBINEAS	CK45
2	2	BR-322.230.500	KUNSTOF LAMELENDICHTINGSRING 30X555X7	
3	2	BL-143.005.500	EENRIJIG KEGELLAGER 4T 32006X	
4	1	MPA-01.150.620	LAGERHUIS	
5	4	BS-531.001.200	DIN 125 RONDELLE M12	
6	4	BS-502.001.200	DIN 985 ECROU NYLON M12	
7	1	BL-900.430.000	BORGRING DIA 30	
8	1	BS-008.003.000	ASMOER_M30	

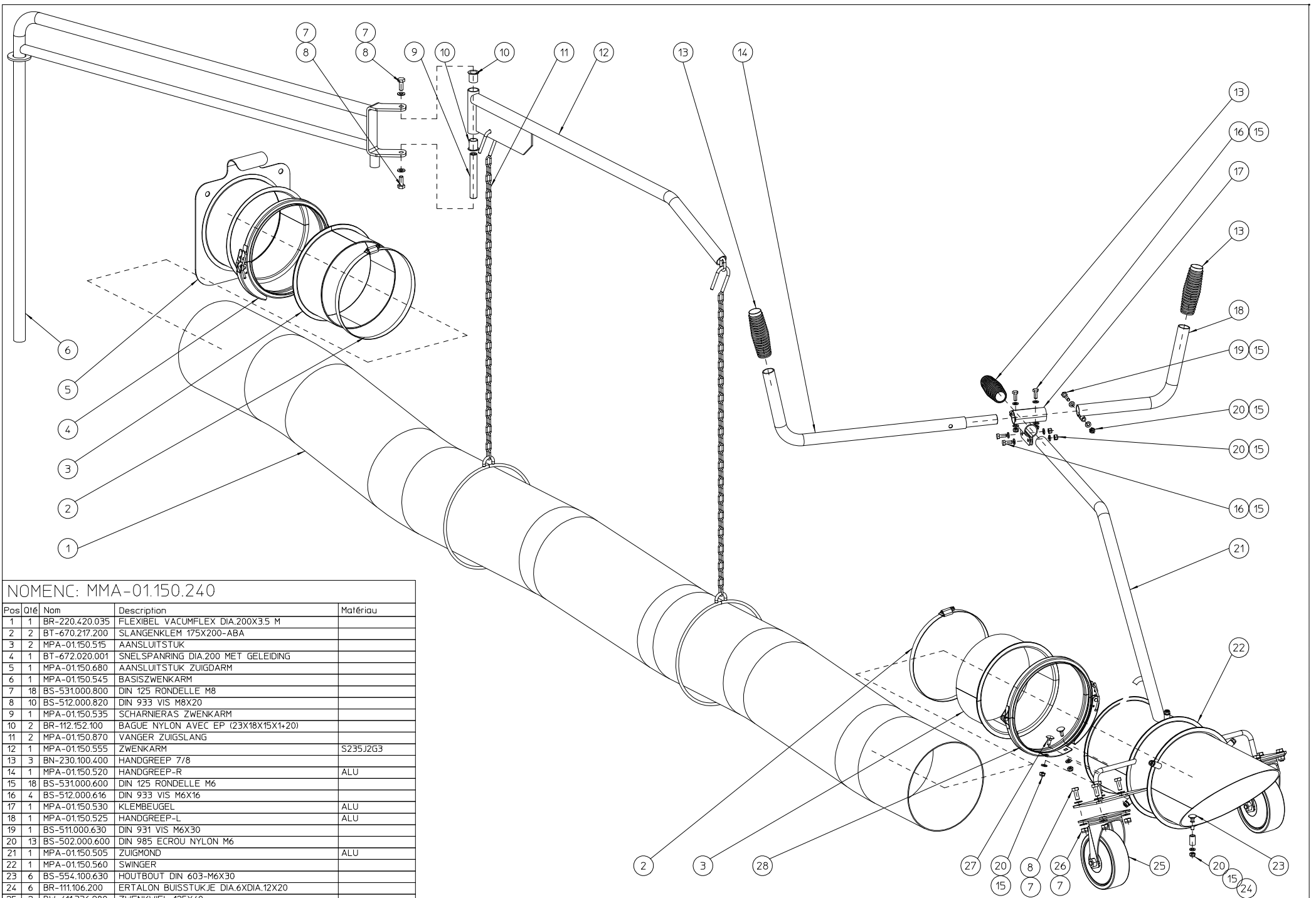
LAGERING TURBINE					
NO	MMA-01.150.220	REV	1	DATE	2007/07/04

NOMENC: MMA-01.150.230

Pos	Qté	Nom	Description	Matériau
1	78	BS-531.000.800	DIN 125 RONDELLE M8	
2	27	BS-502.000.800	DIN 985 ECROU NYLON M8	
3	1	MPA-01.150.120	CE-AFSCHERMING	
4	7	BS-511.000.842	DIN 931 VIS M8X50	
5	1	MPA-01.150.660	BOVENSTE AFSLUITPLAAT TURBINE	
6	1	MPA-01.150.690	VERLENGDE BOCHT TURBINEUITLAAT(OPTIE)	
7	2	MPA-01.150.735	HALVE TEGENFLENS UITLAAT	
8	1	BR-910.000.150	ERTALON RING	
9	2	BR-910.000.160	HALVE LAGERRING	
10	1	MPA-01.150.730	BOCHT TURBINEUITLAAT	
11	4	BS-531.001.000	DIN 125 RONDELLE M10	
12	1	MPA-01.150.720	STEUN OPZETSTUK TURBINE	
13	4	BS-512.000.825	DIN 933 VIS M8X25	
14	2	BS-502.001.000	DIN 985 ECROU NYLON M10	
15	1	BN-630.210.200	STERKKNOP 189-50 M10X20	
16	1	BS-534.001.000	DIN 6798 RONDELLE ELASTIQUE M10	
17	1	MPA-01.150.280	REGELKLEP UITLAAT TURBINE	
18	4	BS-512.000.620	DIN 933 VIS M6X20	
19	8	BS-531.000.600	DIN 125 RONDELLE M6	
20	2	MPA-01.140.040	OPSPANLAT RUBBERSTRIP	
21	1	BR-900.001.280	RUBBER GELUIDSDEMPING TRLO	
22	4	BS-502.000.600	DIN 985 ECROU NYLON M6	
23	1	MPA-01.150.650	TURBINEHUIS	
24	9	BS-511.000.835	DIN 931 VIS M8X35	
25	9	BS-551.000.830	KNEVELSCHROEF DIN 444 M8X30	
26	8	BS-512.000.820	DIN 933 VIS M8X20	
27	1	BA-281753.201	FLANGE HELICE BB450 AVEC 5 TROUS	
28	2	BB-501.311.220	BOULON POUR MOYEU AMOVIBLE-SCR 7/16X7/8<-->TL2012	
29	1	BB-501.153.000	MOYEU AMOVIBLE TL2012_30	
30	1	BB-341.080.735	SPIE 8X7X35	
31	1	MPA-01.150.200	SCHROEF-L-METAAL	
32	1	BT-162.501.081	NAAFDOOP VD41.100X040	
33	5	BS-512.000.816	DIN 933 VIS M8X16	
34	1	MPA-01.150.320	AFSLUITPLAATJE CONTACT	
35	2	BS-512.000.320	DIN 933 VIS M3X20	
36	4	BS-531.000.300	DIN 125 RONDELLE M3	
37	1	MPA-01.150.670	ONDERSTE AFSLUITPLAAT TURBINE	
38	2	BY-204.060.023	LASSCHARNIER MS-PEN-TPL-60_MESSINGRING	
39	1	BE-120.010.500	CONTACTEUR OMRON D2VW-5L31M	
40	2	BS-502.000.300	DIN 985 ECROU NYLON M3	



MONTAGEPLAN TURBINE					
NO	MMA-01.150.230	REV	1	DATE	2007/07/19

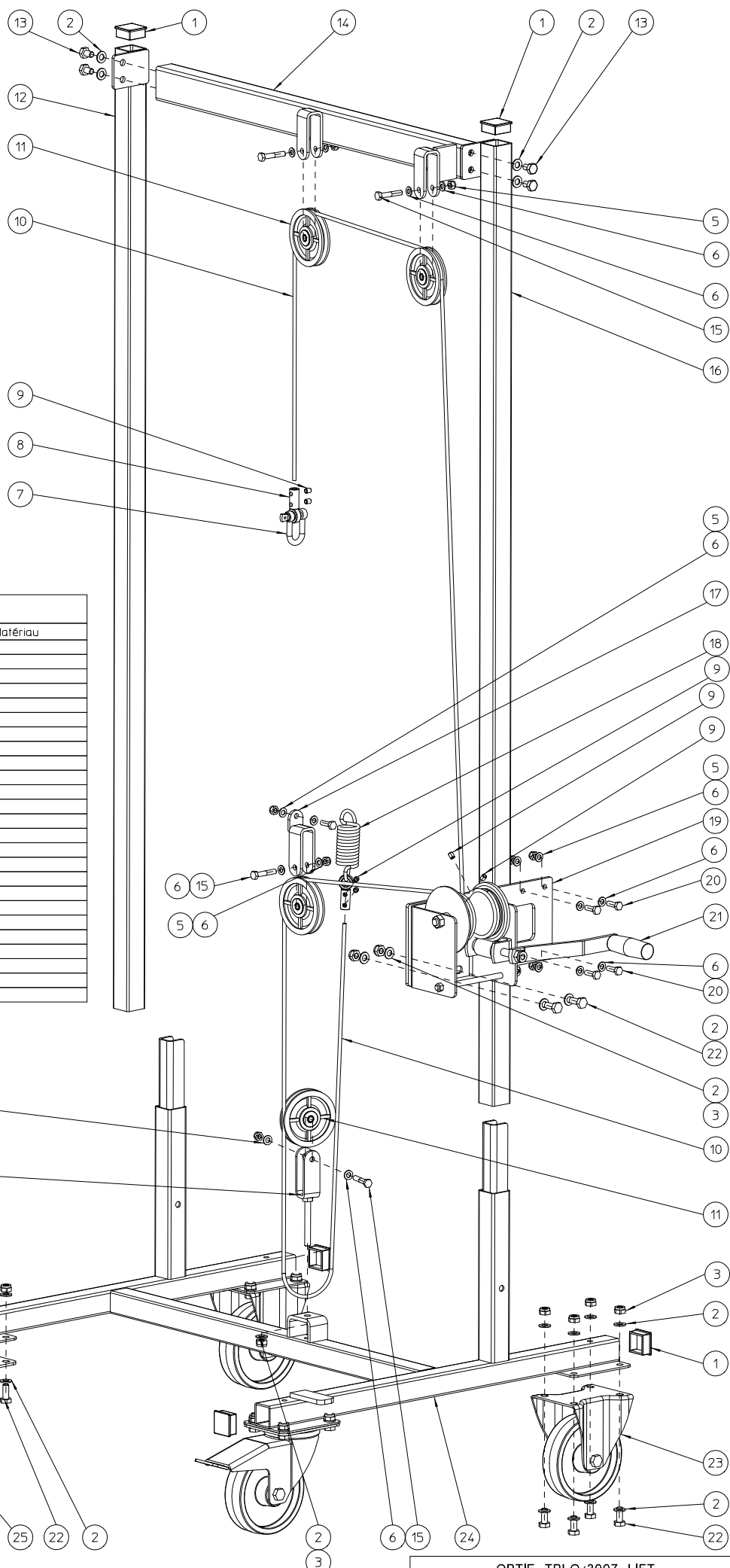


NOMENC: MMA-01.150.240

Pos	Qté	Nom	Description	Matériau
1	1	BR-220.420.035	FLEXIBEL VACUMFLEX DIA.200X3,5 M	
2	2	BT-670.217.200	SLANGENKLEM 175X200-ABA	
3	2	MPA-01.150.515	AANSLUITSTUK	
4	1	BT-672.020.001	SNELSPANRING DIA.200 MET GELEIDING	
5	1	MPA-01.150.680	AANSLUITSTUK ZUIGDARM	
6	1	MPA-01.150.545	BASISZWENKARM	
7	18	BS-531.000.800	DIN 125 RONDELLE M8	
8	10	BS-512.000.820	DIN 933 VIS M8X20	
9	1	MPA-01.150.535	SCHARNIERAS ZWENKARM	
10	2	BR-112.152.100	BAGUE NYLON AVEC EP (23X18X15X1+20)	
11	2	MPA-01.150.870	VANGER ZUIGSLANG	
12	1	MPA-01.150.555	ZWENKARM	S235J2G3
13	3	BN-230.100.400	HANDGREEP 7/8	
14	1	MPA-01.150.520	HANDGREEP-R	ALU
15	18	BS-531.000.600	DIN 125 RONDELLE M6	
16	4	BS-512.000.616	DIN 933 VIS M6X16	
17	1	MPA-01.150.530	KLEMBEUGEL	ALU
18	1	MPA-01.150.525	HANDGREEP-L	ALU
19	1	BS-511.000.630	DIN 931 VIS M6X30	
20	13	BS-502.000.600	DIN 985 ECROU NYLON M6	
21	1	MPA-01.150.505	ZUIGMOND	ALU
22	1	MPA-01.150.560	SWINGER	
23	6	BS-554.100.630	HOUTBOUT DIN 603-M6X30	
24	6	BR-111.106.200	ERTALON BUISSTUKJE DIA.6XDIA.12X20	
25	2	BW-411.336.980	ZWENKWIEL 125X40	
26	8	BS-502.000.800	DIN 985 ECROU NYLON M8	
27	2	BS-554.100.616	DIN 603 VIS A BOIS M6X16	
28	1	MPA-01.150.435	SNELSPANRING	

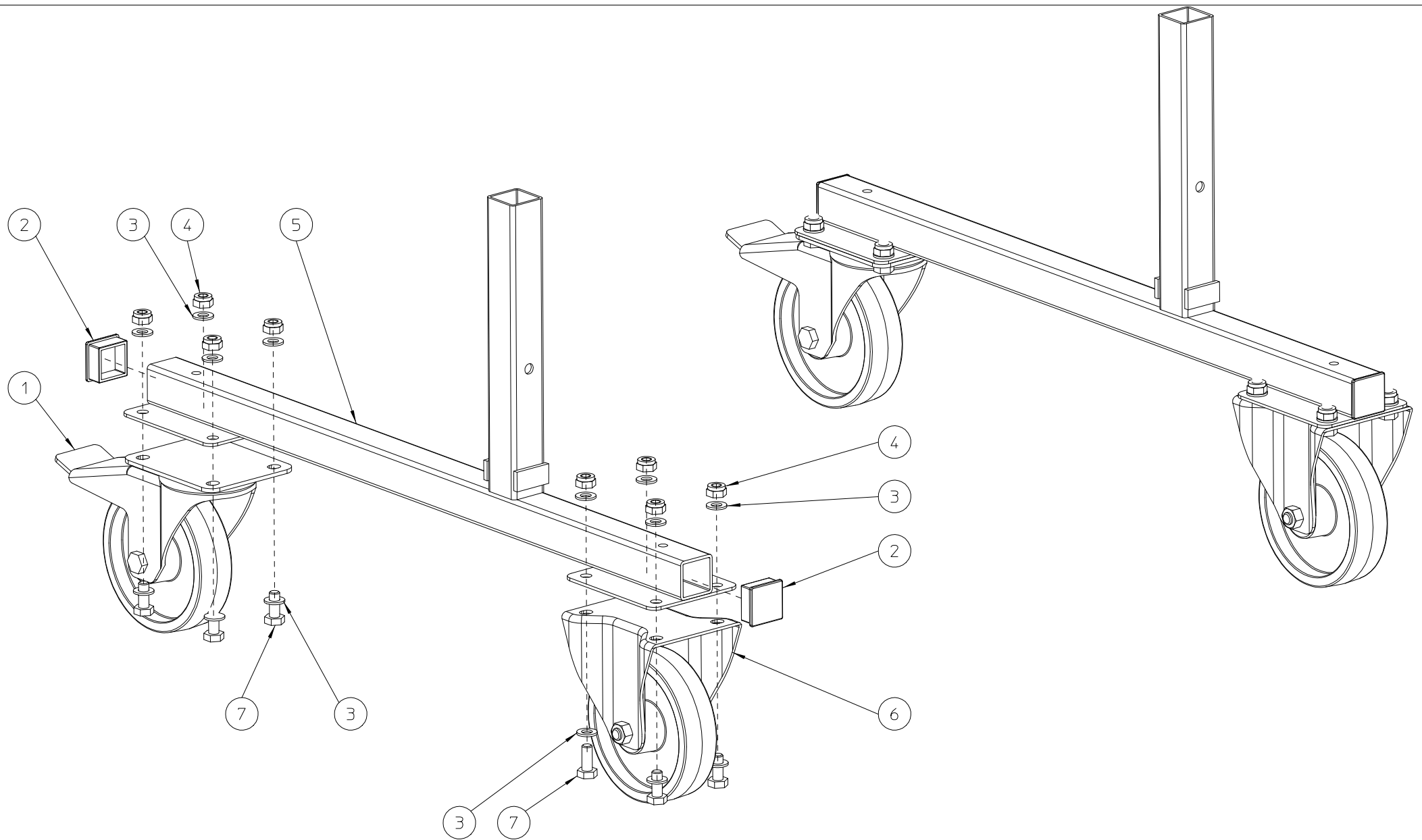
MONT.PLAN ZWENKARM MET AANZUIGLEIDING

NO	MMA-01.150.240	REV	1	DATE	2007/07/25
----	----------------	-----	---	------	------------



NOMENC: MMA-01.150.250

Pos	Qté	Nom	Description	Matériau
1	6	BR-021.140.400	CAPUCHON PVC 40X40	
2	45	BS-531.001.000	DIN 125 RONDELLE M10	
3	21	BS-502.001.000	DIN 985 ECROU NYLON M10	
4	1	MPA-01.150.815	STEUN OMLEIDWIEL_2	
5	9	BS-502.000.800	DIN 985 ECROU NYLON M8	
6	18	BS-531.000.800	DIN 125 RONDELLE M8	
7	1	BY-530.110.000	D-SLUITING M10-DIN 82101 A	
8	2	MPA-01.150.805	KABELKLEMMER	
9	6	BS-023.000.810	DIN 916 VIS DE PRESSION M8X10	
10	2	BK-120.600.034	LIFTKABEL	
11	4	BA-032.099.200	OMLEIDWIEL 100X82X22 ERTALON	
12	1	MPA-01.150.835	ZIJPROFIEL-L-LIFT	
13	4	BS-512.001.016	DIN 933 VIS M10X16	
14	1	MPA-01.150.850	DWARSBALK LIFT-BOVEN	
15	4	BS-511.000.841	DIN 931 VIS M8X45	
16	1	MPA-01.150.840	ZIJPROFIEL-R-LIFT	
17	1	MPA-01.150.810	STEUN OMLEIDWIEL	
18	1	BV-915.000.050	TREKVEER 5,5X39X115	
19	1	MPA-01.150.820	MONTAGEPLAAT KABELLIER	
20	5	BS-512.000.825	DIN 933 VIS M8X25	
21	1	BY-310.107.501	WINCH KW1500/700KG-AANGEPAST	
22	20	BS-512.001.025	DIN 933 VIS M10X25	
23	2	BW-411.432.250	BOKWIEL 150X40	
24	1	MPA-01.150.830	ONDERGESTEL LIFT	
25	2	BW-411.489.280	ZWENKWIEL 150X40	



NOMENC: MMA-01.150.260

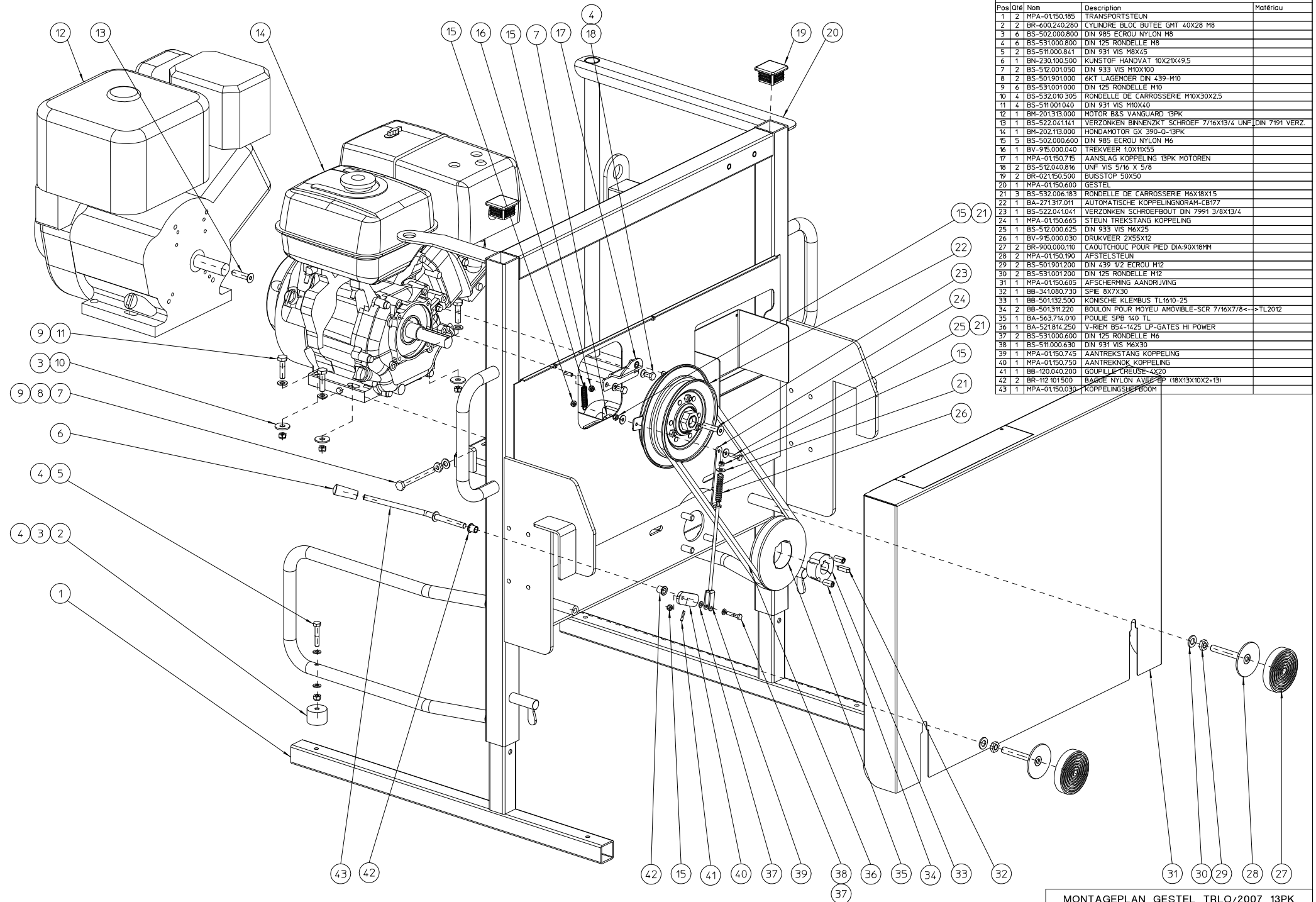
Pos	Qté	Nom	Description	Matériau
1	2	BW-411.489.280	ZWENKWIEL 150X40	
2	4	BR-021.140.400	CAPUCHON PVC 40X40	
3	32	BS-531.001.000	DIN 125 RONDELLE M10	
4	16	BS-502.001.000	DIN 985 ECROU NYLON M10	
5	2	MPA-01.150.180	MOBIELE TRANSPORTSTEUN	
6	2	BW-411.432.250	BOKWIEL 150X40	
7	16	BS-512.001.025	DIN 933 VIS M10X25	

TRLO/2007 OPTIE-MOBIELE TRANSPORTSTEUN

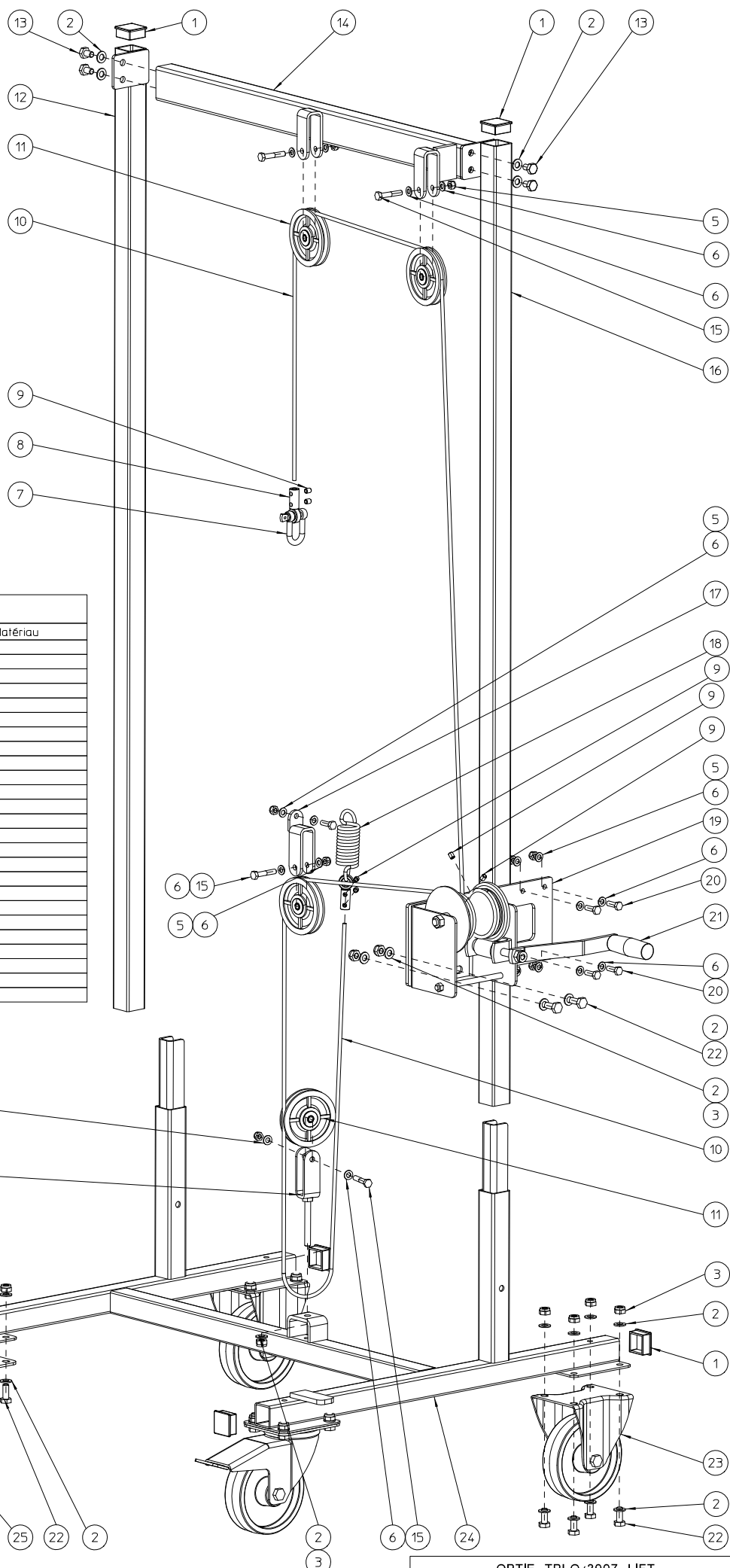
NO	MMA-01.150.260	REV	1	DATE	2007/07/04
----	----------------	-----	---	------	------------

NOMENC: MMA-01.150.310

Pos	Qte	Nom	Description	Matériau
1	2	MPA-01150.185	TRANSPORTSTEUN	
2	2	BR-600.240.280	CYLINDRE BLOC BUTEEE GMT 40X28 M8	
3	6	BS-502.000.800	DIN 985 ECROU NYLON M8	
4	6	BS-531.000.800	DIN 125 RONDELLE M8	
5	2	BS-511.000.841	DIN 931 VIS M8X45	
6	1	BN-230.100.500	KUNSTOP HANDVAT 10X21X49.5	
7	2	BS-512.001.050	DIN 933 VIS M10X100	
8	2	BS-501.901.000	6KT LAGEHOEFER DIN 439-M10	
9	6	BS-531.001.000	DIN 125 RONDELLE M10	
10	4	BS-532.010.305	RONDELLE DE CARROSSERIE M10X30X2.5	
11	4	BS-511.001.040	DIN 931 VIS M10X40	
12	1	BM-201.313.000	MOTOR B&S VANGUARD 13PK	
13	1	BS-522.041.141	VERZONKEN BINNENZKT SCHROEF 7/16X13/4 UNF DIN 7191 VERZ.	
14	1	BM-202.113.000	HONDAMOTOR GX 390-0-13PK	
15	5	BS-502.000.600	DIN 985 ECROU NYLON M6	
16	1	BV-915.000.040	TREKVEER 10X11X55	
17	1	MPA-01150.715	AANSLAG KOPPELING 13PK MOTOREN	
18	2	BS-512.040.816	UNF VIS 5/16 X 5/8	
19	2	BR-021150.500	BUSSTOP 50X50	
20	1	MPA-01150.600	GESTEL	
21	3	BS-532.006.183	RONDELLE DE CARROSSERIE M6X18X1.5	
22	1	BA-271.317.011	AUTOMATISCHE KOPPELINGNORAM-CB177	
23	1	BS-522.041.041	VERZONKEN SCHROEFBOUT DIN 7991 3/8X13/4	
24	1	MPA-01150.665	STEUN TREKSTANG KOPPELING	
25	1	BS-512.000.625	DIN 933 VIS M6X25	
26	1	BV-915.000.030	DRUKVEER 2X55X12	
27	2	BR-900.000.110	CAOUTCHOUC POUR PIED DIA:90X18MM	
28	2	MPA-01150.199	AFSTELSTEUN	
29	2	BS-501.901.200	DIN 439 1/2 ECROU M12	
30	2	BS-531.001.200	DIN 125 RONDELLE M12	
31	1	MPA-01150.605	AFSCHERMING AANDRIJVING	
32	1	BB-341.080.730	SPIE 8X7X30	
33	1	BB-501.132.500	KONISCHE KLEMBUS TL1610-25	
34	2	BB-501.311.220	BOULON POUR MOYEU AMOVIBLE-SCR 7/16X7/8-->TL2012	
35	1	BA-563.374.010	POULIE SP8 140 TL	
36	1	BA-521.844.250	V-RIEM B54-1425 LP-GATES HI POWER	
37	2	BS-531.000.600	DIN 125 RONDELLE M6	
38	1	BS-511.000.630	DIN 931 VIS M6X30	
39	1	MPA-01150.745	AANTREKSTANG KOPPELING	
40	1	MPA-01150.750	AANTREKNOK KOPPELING	
41	1	BB-120.040.200	GOUJILLE CREUSE 4X20	
42	2	BR-112.101.500	BAGDE NYLON AVEZ EP (18X13X10X2+13)	
43	1	MPA-01150.030	KOPPELINGSPLEETBOOM	



MONTAGEPLAN GESTEL TRLO/2007 13PK				
NO	MMA-01.150.310	REV	1	DATE 2007/07/21



NOMENC: MMA-01.150.250

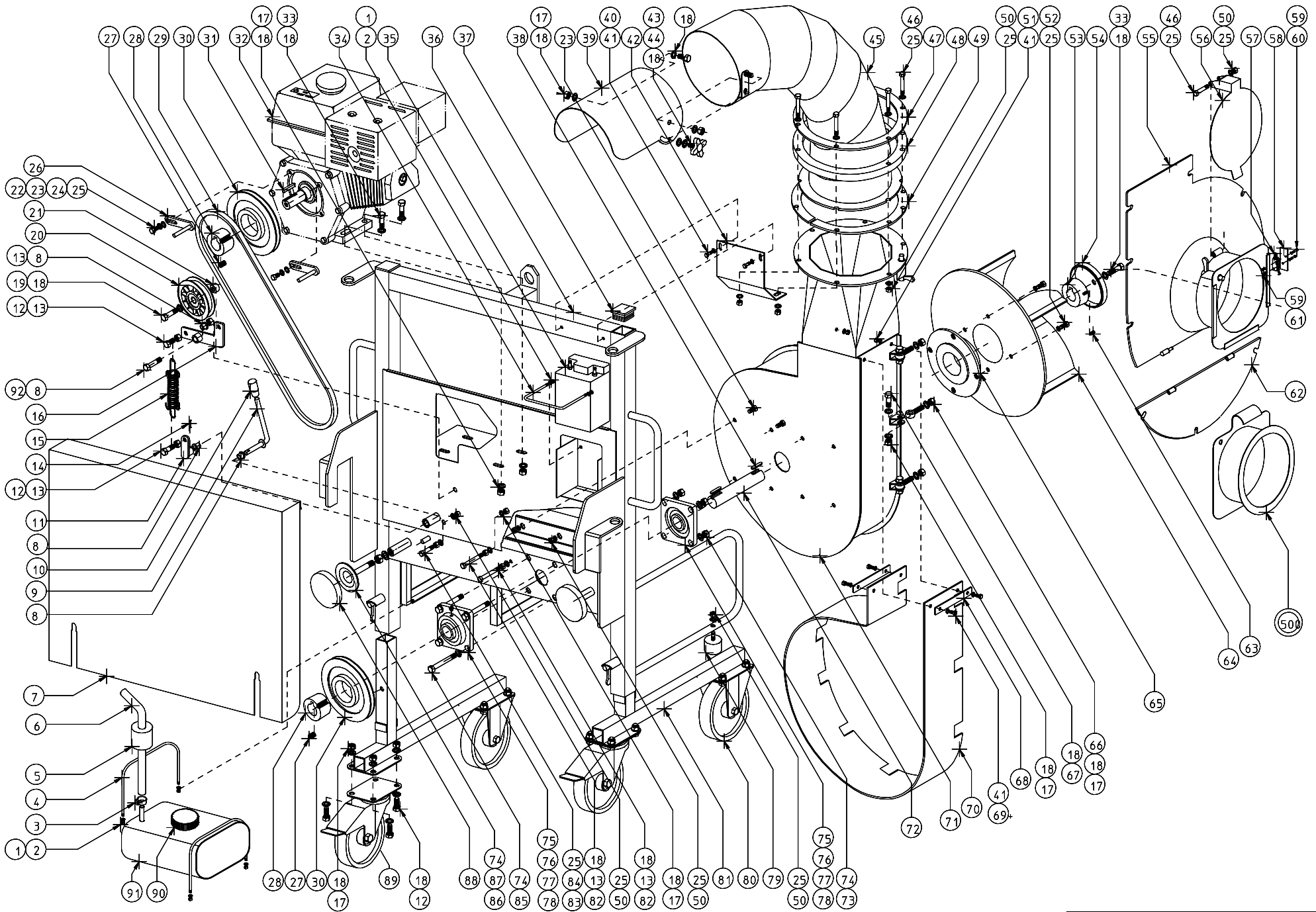
Pos	Qté	Nom	Description	Matériau
1	6	BR-021.140.400	CAPUCHON PVC 40X40	
2	45	BS-531.001.000	DIN 125 RONDELLE M10	
3	21	BS-502.001.000	DIN 985 ECROU NYLON M10	
4	1	MPA-01.150.815	STEUN OMLEIDWIEL_2	
5	9	BS-502.000.800	DIN 985 ECROU NYLON M8	
6	18	BS-531.000.800	DIN 125 RONDELLE M8	
7	1	BY-530.110.000	D-SLUITING M10-DIN 82101 A	
8	2	MPA-01.150.805	KABELKLEMMER	
9	6	BS-023.000.810	DIN 916 VIS DE PRESSION M8X10	
10	2	BK-120.600.034	LIFTKABEL	
11	4	BA-032.099.200	OMLEIDWIEL 100X82X22 ERTALON	
12	1	MPA-01.150.835	ZIJPROFIEL-L-LIFT	
13	4	BS-512.001.016	DIN 933 VIS M10X16	
14	1	MPA-01.150.850	DWARSBALK LIFT-BOVEN	
15	4	BS-511.000.841	DIN 931 VIS M8X45	
16	1	MPA-01.150.840	ZIJPROFIEL-R-LIFT	
17	1	MPA-01.150.810	STEUN OMLEIDWIEL	
18	1	BV-915.000.050	TREKVEER 5,5X39X115	
19	1	MPA-01.150.820	MONTAGEPLAAT KABELLIER	
20	5	BS-512.000.825	DIN 933 VIS M8X25	
21	1	BY-310.107.501	WINCH KW1500/700KG-AANGEPAST	
22	20	BS-512.001.025	DIN 933 VIS M10X25	
23	2	BW-411.432.250	BOKWIEL 150X40	
24	1	MPA-01.150.830	ONDERGESTEL LIFT	
25	2	BW-411.489.280	ZWENKWIEL 150X40	

MANUEL PIECES DETACHEES ELIET

TRUCKLOADER VERSION 2

APERCU GENERAL DES LISTES

	NUMERO DE LA LISTE	DESCRIPTION	NUMERO DE DESSIN	PRODUIT APRES
1	LISTE D'ASSEMBLAGE 1	MASCHINE	MMA 01 150 110-2	01.02.2003
2	LISTE D'ASSEMBLAGE 2	TRUCKLOADER-ZUIGLEIDING-FLEXIBEL	MMA 01 150 120-2	01.02.2003



ELIET TRUCK LOADER -- CHASSIS				
NO	MMA-01.150.110	REV	2	DATE 2006/07/06

MANUEL PIECES DETACHEES ELIET

TRUCKLOADER VERSION 2

LISTE D'ASSEMBLAGE 1

MASCHINE

MMA 01 150 110-2

NUMERO	NUMERO D'ARTICLE	DESCRIPTION	QUANTITE
1	BS 502 000 500	ECROU A NYLON M5 DIN 985	6
2	BS 531 000 500	RONDELLE M5 DIN 125	6
3	BT 670 110 180	COLLIER 10X18MM	4
4	MPA 01 150 010	ETRIER DE FIXATION DU RESERVOIR	2
5	BM 260 493 629	FILTRE A ESSENCE	1
6	BR 200 207 050	TUYAU ASPIRATION ESSENCE	1
7	MPA 01 150 250	PROTECTION DE TRANSMISSION	1
8	BR 112 100 600	BAGUE NYLON AVEC COLLERETTE (10/13.5/25x6/2.5)	3
9	MPA 01 150 030	LEVIER D'EMBRAYAGE	1
10	BN 230 100 500	POIGNEE EN CAOUTCHOUC	1
11	MPA 01 150 040	BIELLE DE TENSION	1
12	BS 512 001 020	BOULON M10X20 DIN 933	18
13	BS 501 001 000	ECROU M10 DIN 934	4
14	BB 120 040 200	GOUPILLE ELASTIQUE 4X20 DIN 1481	1
15	BV 915 000 010	RESSORT DE TRACTION LIMITE	1
16	MPA 01 150 050	SUPPORT TENDEUR	1
17	BS 502 001 000	ECROU A NYLON M10 DIN 985	27
18	BS 531 001 000	RONDELLE M10 DIN 125	76
19	BS 511 041 042	BOULON UNF 3/8"X2"	1
20	BA 599 203 100	POULIE TENDEUR Ø90	1
21	MPA 01 150 060	BUSELURE	1
22	BS 512 040 819	BOULON UNF 5/16"X3/4"	1
23	BS 512 000 820	BOULON M8X20 DIN 933	10
24	BS 534 000 800	RONDELLE DE SERRAGE M8 DIN 6798A	2
25	BS 531 000 800	RONDELLE M8 DIN 125	16
26	MPA 01 150 260	GUIDE POUR COURROIE	2
27	BB 501 310 160	BOULON POUR MOYEU AMOVIBLE 3/8"X5/8"	2
28	BB 501 133 000	MOYEU AMOVIBLE TL 1610-30	1
28*	BB 501 231 600	MOYEU AMOVIBLE TL 1610-1"	1
29	BA 521 215 000	COURROIE XPA 1500	1
30	BA 562 716 001	POULIE SPA 160 TL1610	2
31	BB 342 060 635	CLAVETTE 6.35X6.35X35 DIN 6880	1
32	BM 201 316 001	B&S VANGUARD TWIN 16HP	1
32*	BM 201 318 001	B&S VANGUARD TWIN 18HP	1
32	BM 201 313 000	B&S VANGUARD	1
32	BM 202 113 000	HONDA GX 390	1
33	BS 512 001 042	BOULON M10X50 DIN 933	5
34	MPA 01 150 070	ETRIER DE FIXATION DE LA BATTERIE	1

MANUEL PIECES DETACHEES ELIET

TRUCKLOADER VERSION 2

LISTE D'ASSEMBLAGE 1

MASCHINE

MMA 01 150 110-2

NUMERO	NUMERO D'ARTICLE	DESCRIPTION	QUANTITE
35	BE 240 120 140	BATTERIE 12V 14AH	1
36	MPA 01 150 210	CHASSIS TRUKLOADER 2003	1
37	BR 021 150 500	BOUCHON CARRE 50X50	2
38	BB 341 080 730	CLAVETTE 8X7X30 DIN 6880	2
39	MPA 01 150 280	DEFLECTEUR DE SOUFFLERIE	1
40	BS 512 000 612	BOULON M6X12 DIN 933	2
41	BS 531 000 600	RONDELLE M6 DIN 125	10
42	MPA 01 150 290	RENFORT	1
43	BN 630 210 200	BOULON A BOUTON CRANTES 189-50 M10X20	1
44	BS 534 001 000	RONDELLE DE SERRAGE M10 DIN 6798A	1
45	MPA 01 150 300	TUYAU D'EJECTION	1
46	BS 511 000 843	BOULON M8X55 DIN 931	7
47	MPA 01 150 310	BRIDE DE FIXATION	1
48	BR 910 000 150	BAGUE ERTALON	1
49	BR 910 000 160	DEMI-BAGUE ERTALON	2
50	BS 502 000 800	ECROU A NYLON M8 DIN 985	15
51	BS 502 000 600	ECROU A NYLON M6 DIN 985	4
52	BS 512 000 816	BOULON M8X16 DIN 933	4
53	BB 501 153 000	MOYEU AMOVIBLE TL 2012-30	1
54	MPA 01 150 100	BOUCHON POUR HELICE	1
55	MPA 01 150 230	TOLE FRONTALE DU VENTILATEUR	1
56	MPA 01 150 120	FERMETURE D'ASPIRATION	1
57	BE 120 010 503	CONTACT DE SECURITE	1
58	MPA 01 150 320	SUPPORT CONTACT	1
59	BS 522 500 316	VIS M3X16 ISO 7380	2
60	BS 531 000 300	RONDELLE M3 DIN 125	4
61	BS 502 000 300	ECROU A NYLON M3 DIN 985	2
62	MPA 01 150 240	TOLE OUVERTURE POUR ENTRETIEN	1
63	BB 501 311 220	BOULON POUR MOYEU AMOVIBLE 7/16"X7/8"	1
64	MPA 01 150 200	HELICE ACIER 5 PALES -G	1
65	BA 281 753 201	FLASQUES POUR HELICE Ø175x32 - TL 2012	1
66	BS 551 101 042	BOULON A OEIL M10X50 DIN 444	9
67	BS 512 001 035	BOULON M10X35 DIN 933	9
68	MPA 01 150 160	LATTE DE FIXATION	2
69	BS 512 000 620	BOUT M6X20 DIN 933	4
70	BR 900 001 280	CAOUTCHOUC D'INSONORISATION	1
71	MPA 01 150 220	CARTER DU VENTILATEUR	1
72	MPA 01 150 170	AXE POUR HELICE	1

MANUEL PIECES DETACHEES ELIET

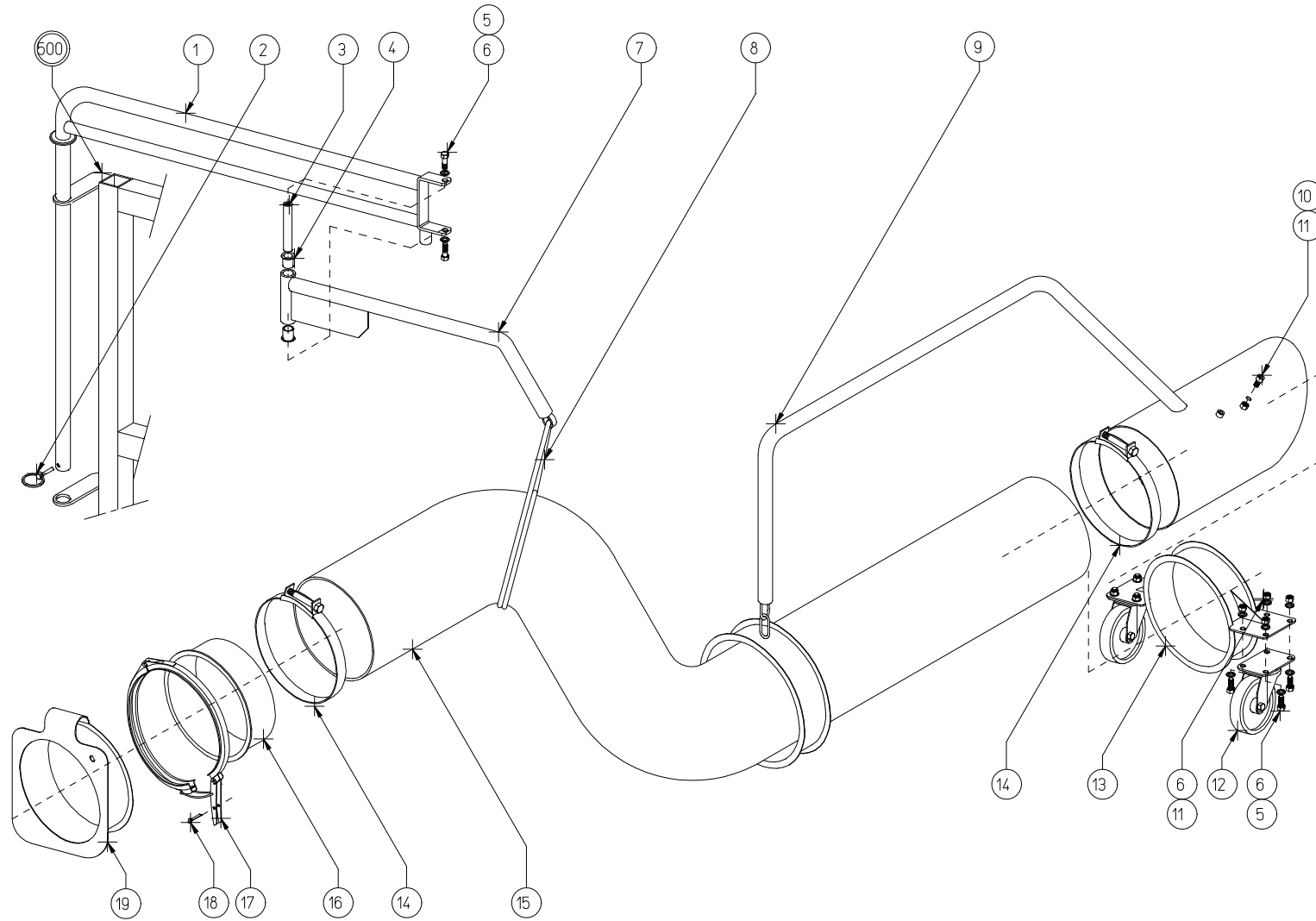
TRUCKLOADER VERSION 2

LISTE D'ASSEMBLAGE 1

MASCHINE

MMA 01 150 110-2

NUMERO	NUMERO D'ARTICLE	DESCRIPTION	QUANTITE
73	BS 502 001 200	ECROU A NYLON M12 DIN 985	4
74	BS 531 001 200	RONDELLE M12 DIN 125	10
75	BY 100 106 100	GRAISSEUR M6	2
76	BL 712 703 507	ROULEMENT AVEC PALIERS UKF 207	2
77	BL 712 703 507	ROULEMENT AVEC PALIERS UKF 207	2
78	BB 502 230 700	MANCHON CONIQUE H 2307	2
79	BR 600 240 280	BUTEE CAOUTCHOUC	2
80	BW 411 432 250	ROUE FIXE 150/40	2
81	MPA 01 150 180	SUPPORT CHASSIS	2
82	BS 511 001 049	BOULON M10X90 DIN 931	2
83	BS 554 100 841	BOULON M8X45 DIN 603	1
84	BS 501 000 800	ECROU M8 DIN 934	3
85	BS 511 001 250	BOULON M12X100 DIN 931 (E 501 PRO)	4
86	BS 501 001 200	ECROU M12 DIN 934	2
87	MPA 01 150 190	SUPPORT CHAUSSETTE	2
88	BR 900 000 110	CHAUSSETTE DE CAOUTCHOUC DIA 90X18MM	2
89	BW 411 489 280	ROUE PIVOTANTE 150/40	2
90	BH 720 101 040	BOUCHON RESERVOIR B40	1
91	BY 717 101 008	RESERVOIR ESSENCE 8 LITRES	1



ELIET TRUCK LOADER--SUCTION HOSE ASSY

NO	MMA-01.150.120	REV	2	DATE	2006/01/11
----	----------------	-----	---	------	------------

MANUEL PIECES DETACHEES ELIET

TRUCKLOADER VERSION 2

LISTE D'ASSEMBLAGE 2

TRUCKLOADER-ZUIGLEIDING-FLEXIBEL

MMA 01 150 120-2

NUMERO	NUMERO D'ARTICLE	DESCRIPTION	QUANTITE
1	MPA 01 150 330	SUPPORT TUYAU PREMIERE PARTIE	1
2	BB 040 304 030	GOUPILLE A RESSORT 4.5X36	1
3	MPA 01 150 340	AXE CHARNIERE	1
4	BR 112 202 100	BAGUE NYLON AVEC COLLERETTE (20/24/29x21/1)	2
5	BS 512 000 820	BOULON M8X20 DIN 933	10
6	BS 531 000 800	RONDELLE M8 DIN 125	2
7	MPA 01 150 350	SUPPORT TUYAU DEUXIEME PARTIE	1
8	BY 725 000 030	ELASTIQUE AVEC CROCHET	1
9	MPA 01 150 360	GOULOTTE D'ASPIRATION	1
10	BS 521 100 812	VIS M8X12 DIN 912	6
11	BS 502 000 800	ECROU A NYLON M8 DIN 985	14
12	BW 411 427 250	ROUE PIVOTANTE 100/30	2
13	MPA 01 150 370	SUPPORT POUR ROUE PIVOTANTE	1
14	BT 670 220 230	COLLIER 200X230MM	2
15	BR 220 420 035	TUYAU D'ASPIRATION	1
16	MPA 01 150 400	EMBOUT POUR TUYAU	1
17	BT 672 020 000	COLLIER FIXATION RAPIDE DU TUYAU Ø 200MM	1
18	BB 135 060 351	GOUPILLE FENDUE Ø 3,5X35 DIN 94	1
19	MPA 01 150 410	FIXATION POUR TUYAU	1