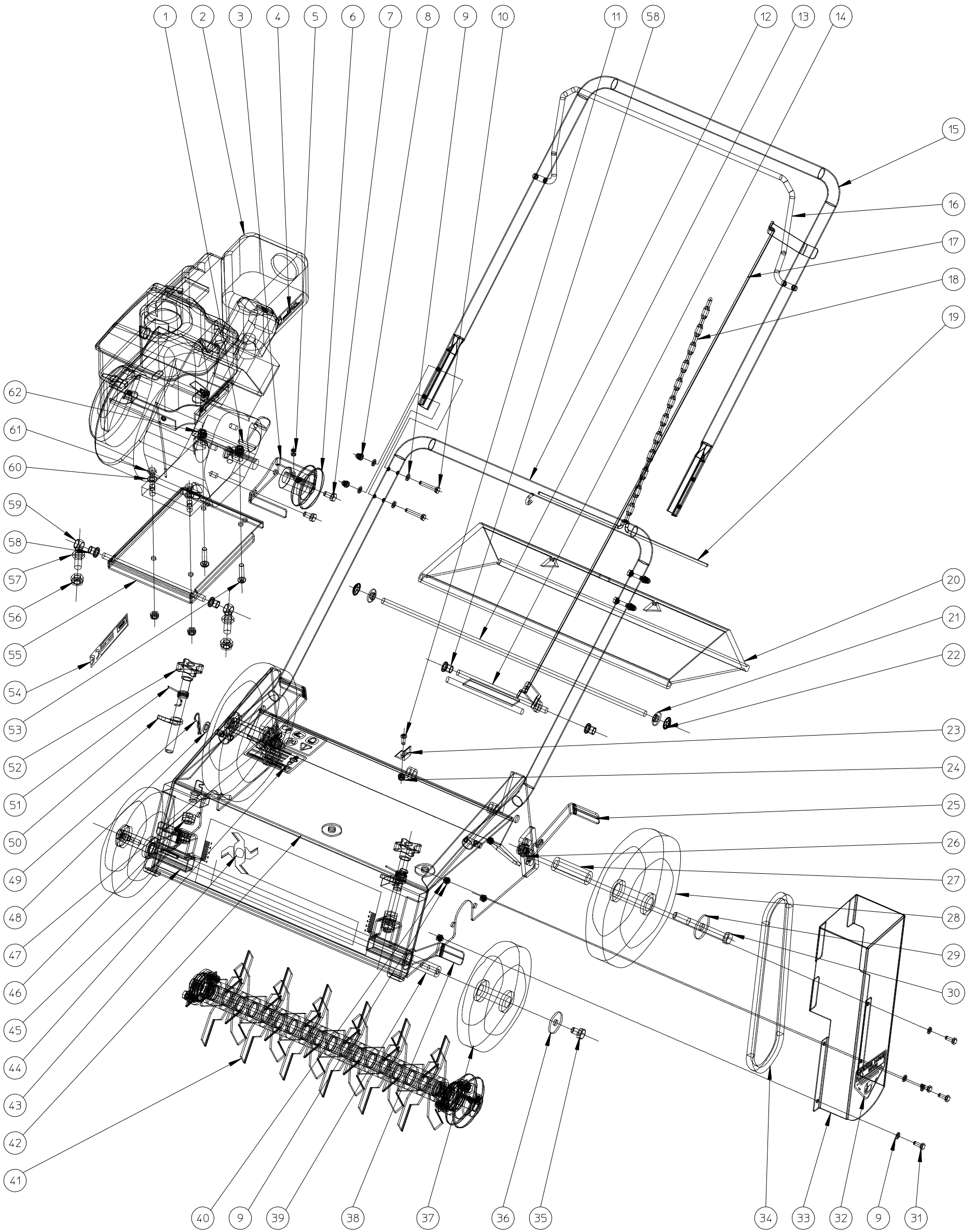


KLIPPO PRO V 500

GENERAL LIST

ITEM	PART NUMBER	DESCRIPTION	QUANTITY
1	MA 058 010 202	EXPLODED VIEW ASSEMBLY CHASSIS - LIST 1	1
2	MMA 01 090 100	EXPLODED VIEW ASSEMBLY ROTOR - LIST 2	1



TITLE		DRWNR	
PRO V500 GC160		MA-058.010.202	
ELIET N.V. - Zwevegemstraat 136 - B-8553 OTEGEM Tel.: +32/56/77.70.88 - Fax.: +32/56/77.5213		DATE	2003/02/07

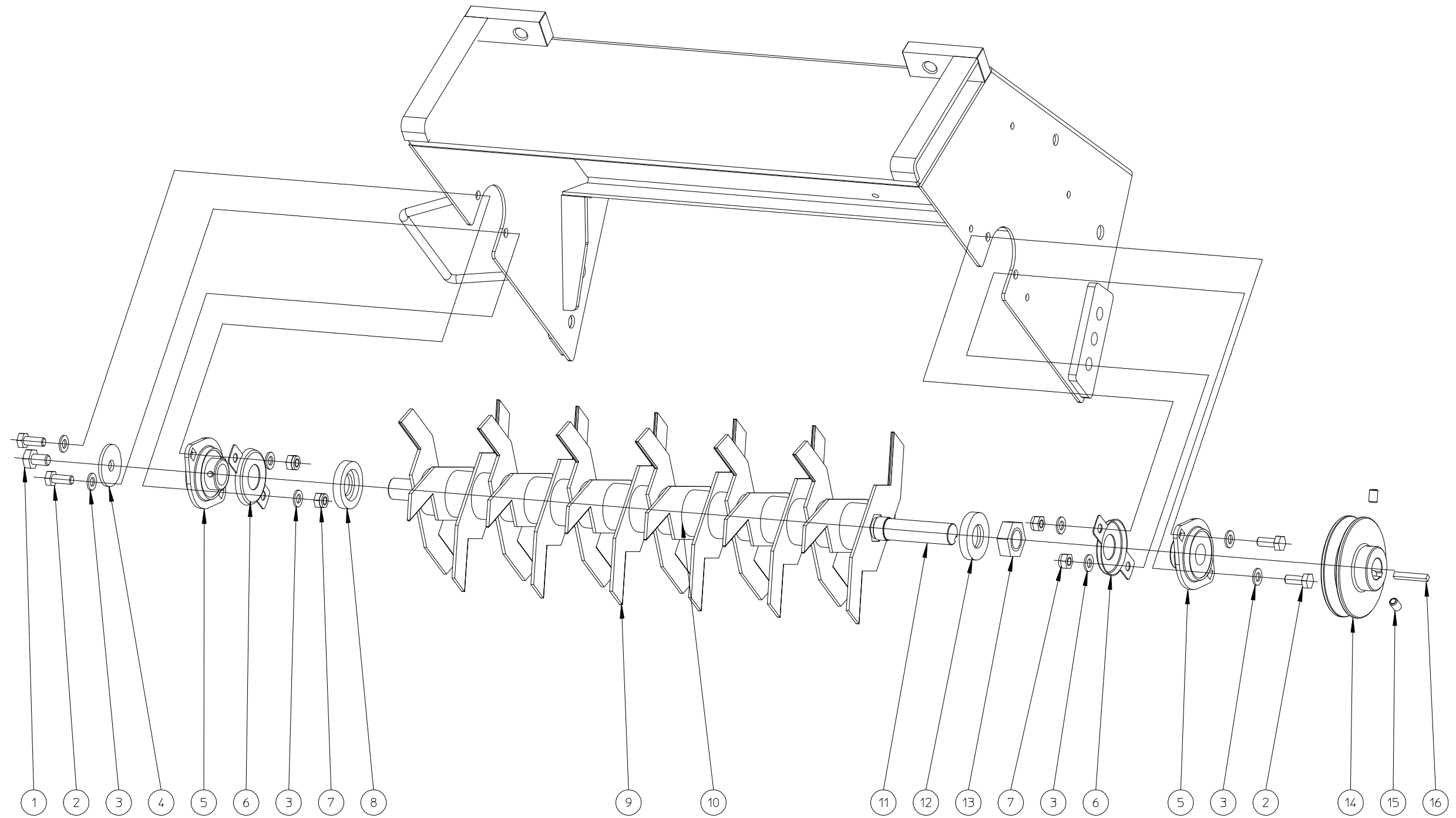
KLIPPO PARTS MANUAL**GARDEN PRO LINE****KLIPPO PRO V 500****ASSEMBLY LIST 1 (MACHINE)**

ITEM	PART NUMBER	DESCRIPTION	QUANTITY
1	63 BB 342 050 535	KEY 4.7X4.7X35	1
2	63 BM 202 005 500	ENGINE HONDA GC 160	1
3	63 MPA 01 090 150	BELT CATCHER PULLEY ENGINE	1
4	63 BQ 505 010 030	STICKER MAX 3200 T/MIN 90X45MM	1
5	63 BS 023 000 812	BOLT M8X12 DIN 916	2
6	63 BA 565 707 101	BELT PULLEY SPA 71 X 3/4" X 3/16"	1
7	63 BS 512 040 816	BOLT 5/16" X 5/8"	2
8	63 BS 505 500 600	NUT M6 DIN 1587	4
9	63 BS 531 000 600	WASHER M6 DIN 125	17
10	63 BX 512 000 635	BOLT M6X35 DIN 933	4
11	63 BS 522 500 616	BOLT M6X16 ISO 7380	1
12	63 MPA 01 090 420	LOWER HANDLE BAR	1
13	63 MPA 01 090 230	ROD	1
14	63 MPA 01 090 210	CLUTCH CRANK	1
15	63 MPA 01 090 430	UPPER HANDLE BAR	1
16	63 MPA 01 090 280	CLUTCH HANDLE	1
17	63 BV 909 000 040	CLUTCH ROD	1
18	63 BY 512 032 344	CHAIN	1
19	63 MPA 01 090 220	CHAIN ATTACHEMENT	1
20	63 BR 900 000 510	RUBBER ANTI PROJECTION DEFLECTOR	1
21	63 BR 112 100 600	NYLON BUSHING (25X13.5X10X2.5+3.5)	2
22	63 BB 011 000 090	STARLOCK DIAM 9MM	2
23	63 MPA 01 090 130	RETAINING SUPPORT	1
24	63 BS 502 000 600	SELF LOCKING NUT M6 DIN 985	1
25	63 MPA 01 090 290	WHEEL SCRAPER	2
26	63 BS 531 001 200	WASHER M 12 DIN 125	2
27	63 MPA 01 090 310	WHEEL AXLE	2
28	63 BW 125 020 000	REAR WHEEL 250/60 100	2
29	63 BS 532 012 456	WASHER M12X45X3	2
30	63 BS 511 001 251	BOLT M12X10 DIN 931	2
31	63 BS 512 000 616	BOLT M6X16 DIN 933	4
32	63 BQ 502 010 060	TRIANGULAR STICKER DANGER 100X80	1
33	63 MPA 01 090 250	BELT COVER	1
34	63 BA 521 208 000	V-BELT XPA 800 QUAD-POWER	1
35	63 BS 512 001 016	BOLT M10X16 DIN 933	2
36	63 BS 532 010 406	WASHER M10X40X3	2
37	63 BW 120 020 000	FRONT WHEEL 200/50-100	2
38	63 MPA 01 090 270	HIGHT ADJUSTMENT SUPPORT R	1
39	63 MPA 01 090 100	FRONT WHEEL AXLE	1
40	63 BS 501 000 600	NUT M6 DIN 934	4

KLIPPO PRO V 500

ASSEMBLY LIST 1 (MACHINE)

ITEM	PART NUMBER	DESCRIPTION	QUANTITY
41	63 LIST 2	COMPLETE ROTOR FIXED KNIFES	1
42	63 MPA 01 090 410	CHASSIS	1
43	63 BQ 502 090 010	STICKER KLIPPO PRO V500 370X120	1
44	63 BQ 502 010 040	STICKER SPARK PLUG	1
45	63 MPA 01 090 110	HIGHT ADJUSTMENT SUPPORT L	1
46	63 BS 502 001 400	SELF LOCKING NUT M14 DIN 985	4
47	63 BQ 505 010 050	STICKER WARNING GENERAL 100X60MM	1
48	63 BS 531 001 000	WASHER M10 DIN 125	1
49	63 BB 040 102 040	HAIRPIN COTTER	1
50	63 MPA 01 090 260	LOCKING LEVER	2
51	63 BV 909 000 030	SPRING	2
52	63 BN 630 214 600	BOUTON CRANTES M14X140	2
53	63 BS 522 500 835	BOLT M8X35 ISO 7380	2
54	63 BQ 505 010 010	IDENTITY STICKER CE 120X30	1
55	63 MPA 01 090 140	ENGINE PLATE	1
56	63 BS 502 001 200	SELF LOCKING NUT M12 DIN 985	4
57	63 BS 501 901 200	NUT M12 (1/2) DIN 439	2
58	63 BR 112 101 500	NYLON BUSHING (18X13X10X2+13)	4
59	63 BS 551 001 042	EYE BOLT	2
60	63 BS 531 000 800	WASHER M8 DIN 125	4
61	63 BS 512 000 840	BOLT M8X40 DIN 933	2
62	63 BS 502 000 800	SELF LOCKING NUT M 8 DIN 985	4



TITLE		DRWNR	
ROTOR E501		MMA-01.090.100	
ELIET N.V. - Zwevegemstraat 136 - B-8553 OTEGEM Tel.: +32/56/77.70.88 - Fax.: +32/56/77.5213		DATE	2003/02/06

KLIPPO PRO V 500

ASSEMBLY LIST 2 (ROTOR)

ITEM	PART NUMBER	DESCRIPTION	QUANTITY
1	63 BS 512 001 016	BOLT M10X16 DIN 933	1
2	63 BS 512 000 820	BOLT M8X20 DIN 933	4
3	63 BS 531 000 800	WASHER M8 DIN 125	8
4	63 BS 532 010 406	MUDWING REPAIR WASHER 40X10,5X3	1
5	63 BL 801 102 001	BEARING ASPFL 204	2
6	63 MPA 01 090 300	BEARING PROTECTION PLATE	2
7	63 BS 502 000 800	SELF LOCKING NUT M8 DIN 985	4
8	63 MPA 01 090 520	COLAR 20X45X8 MM	1
9	63 BU 102 100 200	KNIFE	18
10	63 BR 111 292 510	NYLON BUSHING 44X28.5X25	17
11	63 MPA 01 090 500	ROTOR AXLE	1
12	63 MPA 01 090 510	COLAR 20X45X10MM	1
13	63 BS 501 902 200	NUT M22 (1/2) DIN 934	1
14	63 BA 565 709 001	BELT PULLEY SPA 90X20X5	1
15	63 BS 023 000 812	SET SCREW M8X12 DIN 916	2
16	63 BB 341 050 535	KEY 5X5X35	1