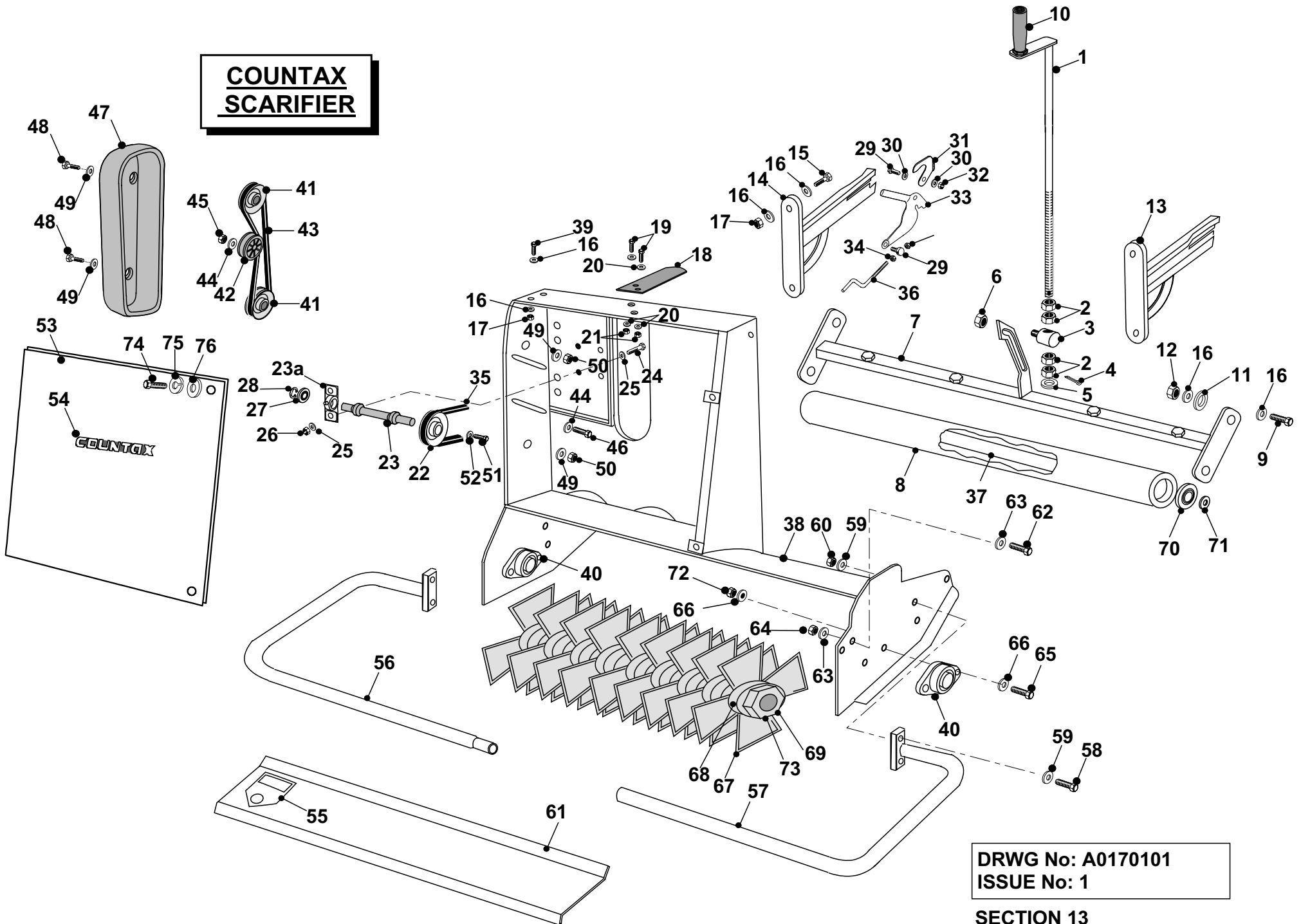


**COUNTAX
SCARIFIER**



**DRWG No: A0170101
ISSUE No: 1**

SECTION 13

COUNTAX SCARIFIER - PARTS LIST

	PART DESCRIPTION	PART NUMBER
1	Microset Adjustment Rod	318950900
2	Nut 12mm	04822300
3	Trunnion	18805500
4	Split Pin	06823300
5	Washer M12	089418500
6	Nyloc Nut M10	04886100
7	Roller Housing	327360100
8	Roller Tube Assembly	327002700
9	Bolt M8 x 30mm	018001600
10	Handle Adjustment Rod	148009500
11	Pivot Spacer	183023600
12	Nyloc Nut M8	04850600
13	Link Arm R/H	327022500
14	Link Arm L/H	327022600
15	Bolt M8 x 25mm	01902300
16	Washer M8	088000200
17	Nyloc Nut M8	04850600
18	PTO Guard Retainer	301070000
19	Bolt M8 x 25mm	01902300
20	Washer M8	088001800
21	Nyloc Nut M8	04850600
22	Drive Pulley 3"	32727600
22a	Belt A55 Super 2 Dayco	228001100
23	Shaft Support Block	321123500
23a	Bearing Shaft	327023800
24	Bolt M10 x 40mm	019479100
25	Washer M10	088002400
26	Nyloc Nut M10	04886100
27	Bearing Shaft Support Block	108728100
27a	Bearing Shaft	327023800
28	Circlip Ext: M25	078000500
29	Bolt ¼" x 1" UNF	01844700
30	Washer ¼" T3 LP	08827800
31	Sweeper Locking Lug L/H	30149800
	Sweeper Locking Lug R/H	30150300
32	Nut 5/16" UNF Nyloc	04827500
33	Locking Lever L/H	27707701
	Locking Lever R/H	27707801
34	Nut ¼"	14938100
36	Adjustment Rod	313003500
37	Roller Shaft Internal	327023900
38	Body Assembly	327022700

JULY 2001

COUNTAX SCARIFIER – PARTS LIST

39	Bolt M8 x 20mm	02825900
40	Bearing M20	108728200
41	Pulley	20870800
42	Pulley	20811500
43	Belt A43 A & D Series	228001300
43	Belt A38 C Series only	22950300
44	Washer M8	088001800
45	Nut Nyloc M8	04850600
46	Bolt M8 x 50	018001800
47	Belt Guard	14849800
48	Bolt M8 x 70mm	01854800
49	Washer M8	088001800
50	Nut Nyloc M8	04850600
51	Bolt M8 x 16	018000500
52	Washer M8	088001800
53	Front Top Cover	303072200
54	Countax Badge	35932500
55	Decal `Blade Danger`	35803300
56	Safety Frame Guard L/H	301070100
57	Safety Frame Guard R/H	301070200
58	Screw M8 x 25mm	01902300
59	Washer M8	088001800
60	Nut Nyloc M8	04850600
61	Front Lower Cover	303072300
62	Screw M8 x 25mm	01902300
63	Washer M8	088001800
64	Nut Nyloc M8	04850600
65	Screw M12 x 40mm	028002100
66	Washer M12	089418500
67	Scarifying Tine	169381600
68	Spacer 23mm	183023700
69	Plain Nut 1" BSF	049381700
70	Bearing 6203 3RS	10811600
71	Washer 5/16" T4 HP	08819500
72	Nut Nyloc M12	049381100
73	Screw M8 x 8mm	028002000
74	Screw M6 x 16mm	019479200
75	Washer, Spring M6	089418400
76	Washer M6	088000300

JULY 2001